

HDS-40X



BendPak®

Four-Post Lifts

SKU# 5175178

40,000-Lb. Capacity, Heavy-Duty Truck Lift / Extended

The Only Heavy-Duty Truck Lift You'll Ever Need

40,000 lbs. take a lot of muscle to lift, and many vehicles of this caliber are longer than our standard-length series of four-post lifts can accommodate. If you want to be prepared for the longest and heaviest, you need the biggest and baddest. At a whopping 310", the HDS-40X is the heaviest-duty extended-length [four-post lift](#) we make. Slap a bus on it and get to work, no sweat.

Choose Standard Length

SKU#	Model	Description
5175176	HDS-40	Standard Length

Features

- 40,000-lb. lifting capacity
- Standard length runways available
- Includes 48" extended steel approach ramps
- Supersized 12" diameter cable sheaves
- Stainless steel lifting cables
- Grease nipples
- Single hydraulic under-runway cylinder
- Integrated flow restrictor
- Durable powder coat
- Spring-loaded safety locks
- Second lock system on constant guard
- Fully enclosed lifting cables
- Multiple adjustable height locking positions
- Maintenance-free electric hydraulic power system
- Conveniently positioned operator controls
- 12" x 12" base plates
- Runways feature a durable matte finish
- Optional rolling jacks

Note: An air supply (minimum 30 psi / 3 CFM) is required for the safety-lock mechanisms to disengage. It is solely the responsibility of the end-user to provide, install and maintain the air supply.

Not all BendPak lift models meet the standards as prescribed by ANSI/ALI ALCTV-2017 or ANSI/UL 201. Consult www.autolift.org for a complete list or contact BendPak via contact@bendpak.com.



Extended Runways

We extend the runways on our heavy-duty truck lifts to keep your cargo safe. Steep ramps sometimes cause drivers to accidentally hit the pedal too hard and overshoot their target. A gradual climb maximizes loading and unloading convenience, as well as safety.

Dual-hub cable sheaves

Simply put, bigger sheaves and sheave axles make for a sturdier, safer and more powerful car lift. We build our four-post lift sheaves 12" in diameter, accompanied by 4" diameter sheave axles. You can expect low-maintenance and high-functioning parts for many years to come.

Heavy-duty aircraft cable

Our 1/2" diameter, 6 x 25 stainless-steel lifting cables have a 14,000-lb. breaking strength per cable. The four cables alone, without the hydraulic cylinder, offer more than enough power to safely lift your 35,000-lb. truck. We over-engineer our components and proudly wear our ALI Certification on the columns of our four-post lifts for all the world to see.

Built-in lubrication

Grease nipples are useful devices because they make the HDS-40X a self-lubricating, auto-maintaining powerhouse. This massive car lift reduces your costs by giving you quality parts, like self-lubricating sheaves, which require only periodic attention.

Large base plates

Truck lift base plates are made a little wider than the bases of our lighter-duty four-post lift models: 12" x 12" plate dimensions are sturdy and can be easily bolted into suitable concrete flooring for years.



John M. Ellsworth Co., Inc.

P.O. Box 240072
8700 West Bradley Road
Milwaukee, WI 53224

800-333-3331 **PHONE**

info@jmesales.com **E-MAIL**
www.JMEsales.com **WEB**

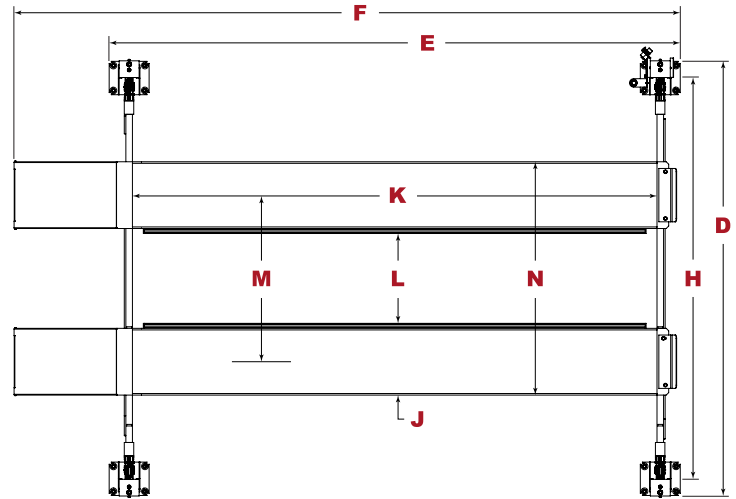
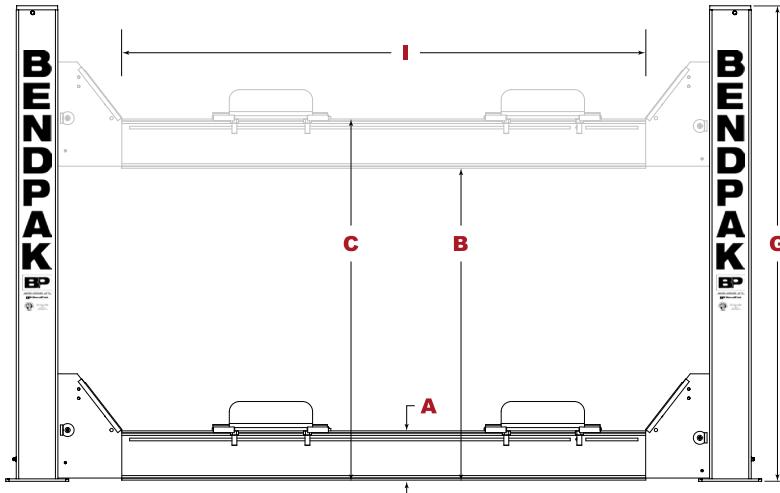
SPECIFICATIONS

BendPak®

Four-Post Lifts

SKU# 5175178

40,000-Lb. Capacity, Heavy-Duty Truck Lift / Extended



Model	HDS-40	HDS-40X
SKU#	5175176	5175178
Lifting Capacity	40,000 lbs. (18,144 kg)	40,000 lbs. (18,144 kg)
A - Min. Runway Height	9.5" (241 mm)	9.5" (241 mm)
B - Max. Rise	61.25" (1,559 mm)	61.25" (1,559 mm)
C - Max. Lifting Height	69.5" (1,766 mm)	69.5" (1,766 mm)
D - Overall Width	153.5" (3,899 mm)	153.5" (3,899 mm)
E - Outside Length	257" (6,528 mm)	317" (8,052 mm)
F - Overall Length	313.75" (7,969 mm)	373.5" (9,487 mm)
G - Height of Columns	91.25" (2,318 mm)	93" (2,362 mm)
H - Width Between Columns	133.5" (3,391 mm)	134" (3,404 mm)
I - Drive-Thru Clearance	109" (2,769 mm)	109" (2,769 mm)
J - Runway Width	28" (711 mm)	28" (711 mm)
K - Length of Runways	256" (6,502 mm)	316" (8,026 mm)
L - Width Between Runways	40.75" (1,038 mm)	40.75" (1,038 mm)
M - Runway Centerline	73" (1,852 mm)	73" (1,852 mm)
N - Outside Edge of Runways	101" (2,564 mm)	101" (2,564 mm)
Min Wheelbase @ Rated Capacity	185" (4,699 mm)	230" (5,842 mm)
Min Wheelbase @ 75% Capacity	160" (4,064 mm)	195" (4,953 mm)
Min Wheelbase @ 50% Capacity	135" (3,429 mm)	165" (4,191 mm)
Min Wheelbase @ 25% Capacity	110" (2,794 mm)	130" (3,302 mm)
Locking Positions	13	13
Lock Spacing	every 4" (100 mm)	every 4" (100 mm)
Lifting Time	75 sec	75 sec
Motor	220 VAC / 60 Hz / 1 Ph	220 VAC / 60 Hz / 1 Ph



An air supply (minimum 30 psi / 3 CFM) is required for the safety-lock mechanisms to disengage. It is solely the responsibility of the end-user to provide, install and maintain the air supply.

Not all BendPak lift models meet the standards as prescribed by ANSI/ALI ALCTV-2017 or ANSI/UL 201. Consult www.autolift.org for a complete list or contact BendPak via contact@bendpak.com.