

# HDS-40



# BendPak®

## Four-Post Lifts

SKU# 5175176

40,000-lb. Capacity, Heavy-Duty Truck Lift, Extended Ramps

Questions? Contact BendPak's Sales Team

sales@bendpak.com | 1-800-253-2363

Monday - Friday, 7AM to 4:30PM PST

## The Only Heavy-Duty Truck Lift You'll Ever Need

BendPak's newest line of heavy-duty [four-post truck lifts](#) are here. Bigger sheaves, beefier components and a legacy of dependability--get your hands on these massive machines and bring a higher level of service to your garage or shop. BendPak's HDS-Truck Series four-post lifts are a whole new breed of rugged. They're newly engineered super-duty truck lifts that make light work out of heavy lifting. They are built to last and feature increased safety, durability and productivity.



## Choose Extended Length

SKU#	Model	Description
5175178	HDS-40X	Extended Length

## Features

- 40,000-lb. lifting capacity
- Extended length runways available
- Includes 48" extended steel approach ramps
- Supersized 12" diameter cable sheaves
- Stainless steel lifting cables
- Grease nipples
- Single hydraulic under-runway cylinder
- Integrated flow restrictor
- Durable powder coat
- Spring-loaded safety locks
- Second lock system on constant guard
- Fully enclosed lifting cables
- Multiple adjustable height locking positions
- Maintenance-free electric hydraulic power system
- Conveniently positioned operator controls
- 12" x 12" base plates
- Runways feature a durable matte finish
- Optional rolling jacks

Note: An air supply (minimum 30 psi / 3 CFM) is required for the safety-lock mechanisms to disengage. It is solely the responsibility of the end-user to provide, install and maintain the air supply.

Not all BendPak lift models meet the standards as prescribed by ANSI/ALI ALCTV-2017 or ANSI/UL 201. Consult [www.autolift.org](http://www.autolift.org) for a complete list or contact BendPak via [contact@bendpak.com](mailto:contact@bendpak.com).

### Extended Runways

We extend the runways on our heavy-duty truck lifts to keep your cargo safe. Steep ramps sometimes cause drivers to accidentally hit the pedal too hard and overshoot their target. A gradual climb maximizes loading and unloading convenience, as well as safety.

### Dual-hub cable sheaves

Simply put, bigger sheaves and sheave axles make for a sturdier, safer and more powerful car lift. We build our four-post lift sheaves 12" in diameter, accompanied by 4" diameter sheave axles. You can expect low-maintenance and high-functioning parts for many years to come.

### Heavy-duty aircraft cable

Our 1/2" diameter, 6 x 25 stainless-steel lifting cables have a 14,000-lb. breaking strength per cable. The four cables alone, without the hydraulic cylinder, offer more than enough power to safely lift your 35,000-lb. truck. We over-engineer our components and proudly wear our ALI Certification on the columns of our four-post lifts for all the world to see.

### Built-in lubrication

Grease nipples are useful devices because they make the HDS-40 a self-lubricating, auto-maintaining powerhouse. This massive car lift reduces your costs by giving you quality parts, like self-lubricating sheaves, which require only periodic attention.

### Large base plates

Truck lift base plates are made a little wider than the bases of our lighter-duty four-post lift models: 12" x 12" plate dimensions are sturdy and can be easily bolted into suitable concrete flooring for years.

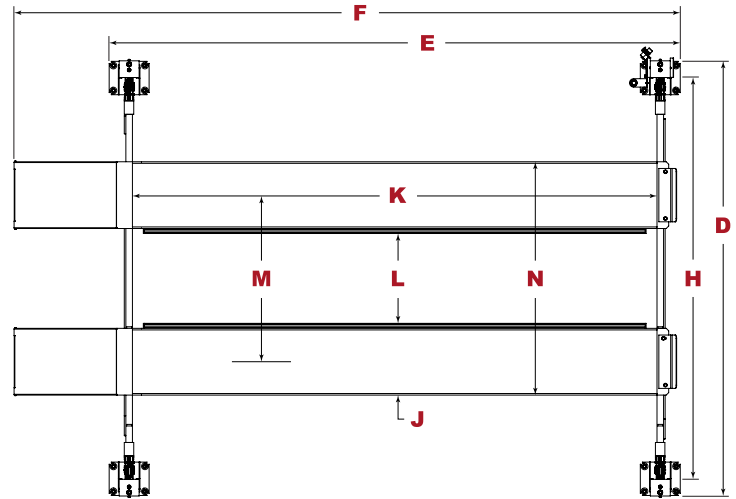
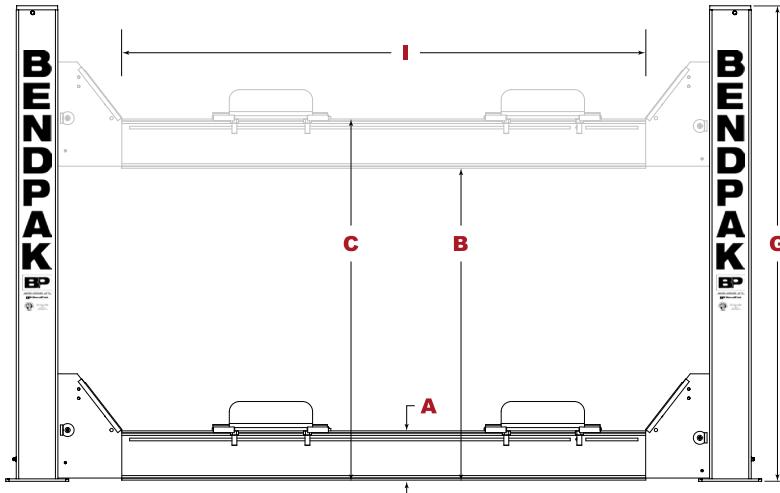
# SPECIFICATIONS

**BendPak®**

## Four-Post Lifts

SKU# 5175176

40,000-lb. Capacity, Heavy-Duty Truck Lift, Extended Ramps



Model	HDS-40	HDS-40X
SKU#	5175176	5175178
Lifting Capacity	40,000 lbs. (18,144 kg)	40,000 lbs. (18,144 kg)
<b>A - Min. Runway Height</b>	9.5" (241 mm)	9.5" (241 mm)
<b>B - Max. Rise</b>	61.25" (1,559 mm)	61.25" (1,559 mm)
<b>C - Max. Lifting Height</b>	69.5" (1,766 mm)	69.5" (1,766 mm)
<b>D - Overall Width</b>	153.5" (3,899 mm)	153.5" (3,899 mm)
<b>E - Outside Length</b>	257" (6,528 mm)	317" (8,052 mm)
<b>F - Overall Length</b>	313.75" (7,969 mm)	373.5" (9,487 mm)
<b>G - Height of Columns</b>	91.25" (2,318 mm)	93" (2,362 mm)
<b>H - Width Between Columns</b>	133.5" (3,391 mm)	134" (3,404 mm)
<b>I - Drive-Thru Clearance</b>	109" (2,769 mm)	109" (2,769 mm)
<b>J - Runway Width</b>	28" (711 mm)	28" (711 mm)
<b>K - Length of Runways</b>	256" (6,502 mm)	316" (8,026 mm)
<b>L - Width Between Runways</b>	40.75" (1,038 mm)	40.75" (1,038 mm)
<b>M - Runway Centerline</b>	73" (1,852 mm)	73" (1,852 mm)
<b>N - Outside Edge of Runways</b>	101" (2,564 mm)	101" (2,564 mm)
<b>Min Wheelbase @ Rated Capacity</b>	185" (4,699 mm)	230" (5,842 mm)
<b>Min Wheelbase @ 75% Capacity</b>	160" (4,064 mm)	195" (4,953 mm)
<b>Min Wheelbase @ 50% Capacity</b>	135" (3,429 mm)	165" (4,191 mm)
<b>Min Wheelbase @ 25% Capacity</b>	110" (2,794 mm)	130" (3,302 mm)
<b>Locking Positions</b>	13	13
<b>Lock Spacing</b>	every 4" (100 mm)	every 4" (100 mm)
<b>Lifting Time</b>	75 sec	75 sec
<b>Motor</b>	220 VAC / 60 Hz / 1 Ph	220 VAC / 60 Hz / 1 Ph



An air supply (minimum 30 psi / 3 CFM) is required for the safety-lock mechanisms to disengage. It is solely the responsibility of the end-user to provide, install and maintain the air supply.