

HDS-18E



BendPak®

Four-Post Lifts

SKU# 5175968

18,000-lb. Capacity, Heavy-Duty Truck Lift, Extended Ramps

Questions? Contact BendPak's Sales Team

sales@bendpak.com | 1-800-253-2363

Monday - Friday, 7AM to 4:30PM PST

Lifting a Bus, Dump Truck or Truly Heavy Farm Equipment?

You may just need the HDS-18E, BendPak's 18,000-lb. capacity [four-post lift](#) that also handles your low-rise sports cars and compacts. Aircraft-quality cables and a single hydraulic cylinder keep this car lift working for you day in and day out.

BendPak's HDS-18E four-post lift is engineered to make light work out of heavy lifting. It's built to last and features upgrades that increase safety, durability and productivity. This is the lift that graduates from the class of mid-size trucks, vans and SUVs up to heavy-duty applications. This is a professional truck lift that can even handle some industrial and farming equipment. It's also lighter-duty than other lifts in the truck-weight category, so it's not overkill when you don't need, for instance, 20 tons of lift capacity when 9 tons will do just fine.

Features

- 18,000-lb. lifting capacity
- Includes 48" extended steel approach ramps
- Supersized 12" diameter cable sheaves
- Stainless steel lifting cables
- Grease nipples
- Single hydraulic under-runway cylinder
- Integrated flow restrictor
- Durable powder coat
- Spring-loaded safety locks
- Second lock system on constant guard
- Fully enclosed lifting cables
- Multiple adjustable height locking positions
- Maintenance-free electric hydraulic power system
- Conveniently positioned operator controls
- 12" x 12" base plates
- Runways feature a durable matte finish
- Optional rolling jacks

Note: An air supply (minimum 30 psi / 3 CFM) is required for the safety-lock mechanisms to disengage. It is solely the responsibility of the end-user to provide, install and maintain the air supply.

Not all BendPak lift models meet the standards as prescribed by ANSI/ALI ALCTV-2017 or ANSI/UL 201. Consult www.autolift.org for a complete list or contact BendPak via contact@bendpak.com.



Dual-hub cable sheaves

Supersized 12" diameter cable sheaves within the runway and cross tubes, combined with massive 4" diameter sheave axles, dramatically improve cable wear and critical component lifespan, meaning this car lift increases your safety, so you spend less money in service-related expenses down the road.

Heavy-duty aircraft cable

The HDS18E four-post lift features four stainless steel lifting cables that do an excellent job of providing abrasion resistance and preventing fatigue.

Built-in lubrication

Grease nipples are located on every sheave and sheave axle to make lubrication maintenance on this car lift a breeze.

Spring-loaded safety locks

Spring-loaded safety locks automatically engage continuously during rise, and adjustable safety ladders allow for precise runway leveling, even if the car lift posts have been installed on slightly sloped floors.

Push-button pneumatic lock release

A simple push-button pneumatic lock release makes lowering operations simple and fast. Aircraft-quality stainless steel and aluminum pneumatic cylinders will provide years of trouble-free service.

Secondary lock system

A secondary lock system is on constant guard and acts as a slack-cable device in the unlikely event of an unexpected cable failure. Only consider a four-post lift that offers this secondary lock system.

Integrated design

Lifting cables, airlines, safety latches and sheaves are all fully enclosed within the car lift structure.



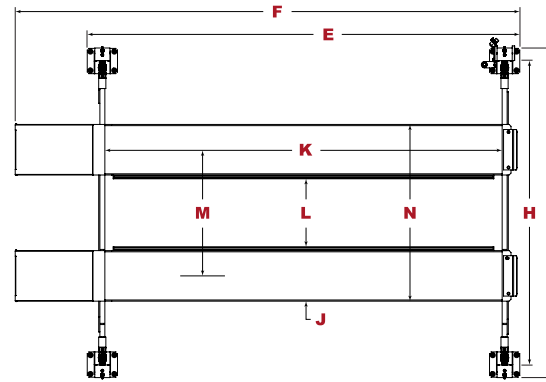
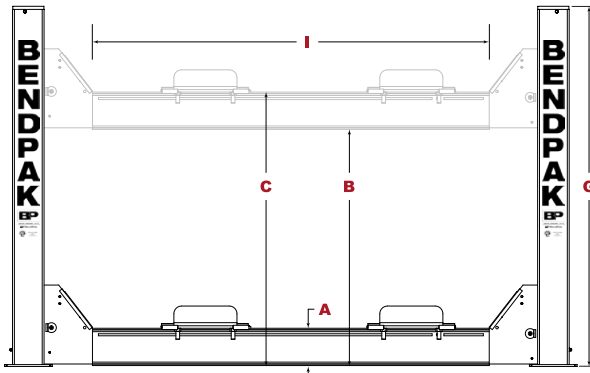
John M. Ellsworth Co., Inc.

A John M. Ellsworth Company

P.O. Box 240072
8700 West Bradley Road
Milwaukee, WI 53224

800-333-3331 **PHONE**

info@jmesales.com **E-MAIL**
www.JMEsales.com **WEB**



HDS-18E

BendPak®



Model	HDS-18E	HDS-27	HDS-27X
SKU#	5175968	5175162	5175164
Lifting Capacity	18,000 lbs. (8,165 kg)	27,000 lbs. (12,247 kg)	27,000 lbs. (12,247 kg)
A - Min. Runway Height	9.5" (241 mm)	9.5" (241 mm)	9.5" (241 mm)
B - Max. Rise	61.25" (1,559 mm)	61.25" (1,559 mm)	61.25" (1,559 mm)
C - Max. Lifting Height	69.5" (1,765 mm)	69.5" (1,765 mm)	69.5" (1,765 mm)
D - Overall Width	153.5" (3,899 mm)	153.5" (3,899 mm)	153.5" (3,899 mm)
E - Outside Length	257" (6,528 mm)	257" (6,528 mm)	317.5" (8,065 mm)
F - Overall Length	312.75" (7,944 mm)	312.75" (7,944 mm)	372.75" (9,468 mm)
G - Height of Columns	91.25" (2,318 mm)	91.25" (2,318 mm)	91.25" (2,318 mm)
H - Width Between Columns	133.5" (3,391 mm)	133.5" (3,391 mm)	133.5" (3,391 mm)
I - Drive-Thru Clearance	109" (2,769 mm)	109" (2,769 mm)	109" (2,769 mm)
J - Runway Width	22" (559 mm)	22" (559 mm)	22" (559 mm)
K - Length of Runways	257.5" (6,541 mm)	257.5" (6,541 mm)	317.5" (8,065 mm)
L - Width Between Runways	40" (1,016 mm) or 45.25" (1,151 mm)	40" (1,016 mm) or 45.25" (1,151 mm)	40" (1,016 mm) or 45.25" (1,151 mm)
M - Runway Centerline	67.25" (1,708 mm) or 72.5" (1,842 mm)	67.25" (1,708 mm) or 72.5" (1,842 mm)	67.25" (1,708 mm) or 72.5" (1,842 mm)
N - Outside Edge of Runways	89.25" (2,266 mm) or 94.5" (2,400 mm)	89.25" (2,266 mm) or 94.5" (2,400 mm)	89.25" (2,266 mm) or 94.5" (2,400 mm)
Min Wheelbase @ Rated Capacity	145" (3,683 mm)	185" (4,699 mm)	230" (5,842 mm)
Min Wheelbase @ 75% Capacity	125" (3,175 mm)	160" (4,064 mm)	195" (4,953 mm)
Min Wheelbase @ 50% Capacity	105" (2,667 mm)	135" (3,429 mm)	165" (4,191 mm)
Min Wheelbase @ 25% Capacity	85" (2,159 mm)	110" (2,794 mm)	130" (3,302 mm)
Locking Positions	13	13	13
Lock Spacing	every 4" (100 mm)	every 4" (100 mm)	every 4" (100 mm)
Lifting Time	75 sec	75 sec	75 sec
Motor	220 VAC / 60 Hz / 1 Ph	220 VAC / 60 Hz / 1 Ph	220 VAC / 60 Hz / 1 Ph

An air supply (minimum 30 psi / 3 CFM) is required for the safety-lock mechanisms to disengage. It is solely the responsibility of the end-user to provide, install and maintain the air supply.

Not all BendPak lift models meet the standards as prescribed by ANSI/ALI ALCTV-2017 or ANSI/UL 201. Consult www.autolift.org for a complete list or contact BendPak via contact@bendpak.com.