

# HDS-14



## Four-Post Lifts

SKU# 5175170

14,000-lb. Capacity, Four-Post Lift

## HDS-14 Four-Post Car Lift: No Such Thing as Overboard

Our competitors might say we overdo it, but we don't include components for the sake of frills and flash. We designed this [four-post lift](#) with the attributes we feel should be considered standard, not add-ons or extras. You can always count on BendPak lifts for increased durability, safety and productivity. Spend less time worrying about what you're working under and more time doing what you love. Our commercial-grade car lifts are second to none.

## Choose Tall or Extended Length

SKU#	Model	Description
5175173	HDS-14X	Extended Length
5175004	HD-14T	82" Rise

## Features

- CE Approved and Certified. Meets or exceeds the standards prescribed by European Standard EN-1493
- Mid to long-style approach ramps for low ground clearance vehicles
- Runways include rail-kit for optional accessories
- Single hydraulic cylinder mounted underneath runway
- Fully enclosed lifting cables, safety locks and sheaves
- Internal anti-sway slider blocks in each column
- Pneumatic push-button safety release
- Heavy-duty 1/2" aircraft cable and 1.75" roller axles
- Safety locks enclosed in columns minimize pinch points
- Oversized sheave diameter reduces cable fatigue
- Oversized self-lubricating cable rollers
- Multi-position safety locks in each column
- Customizable power unit location
- Approach ramps incorporate built-in rear-wheel chocks
- Independent backup slack-cable safety latches
- Runways feature a durable matte finish
- Optional drive-thru ramps available
- Optional drip trays available
- Optional 7,000-lb. capacity rolling jacks available
- ETL approved



### Extended runways

14,000-lb. vehicles have wheelbases that need specialized equipment to keep them safe and supported. Our extended runways prevent wear and tear on your vehicle; driving onto a car lift runway should not feel like your truck is climbing Mt. Everest.

### Dual-hub cable sheaves

Dual-hub cable sheaves reduce stress, fatigue and wear. Huge 10.5" diameter cable sheaves within the runway and cross tubes combine with massive 2.25" diameter sheave axles. This dramatically improves cable wear and critical component lifespan, which means less service-related expenses down the road.

### Heavy-duty aircraft cable

This car lift features four, 1/2" diameter, 6 x 25 stainless-steel lifting cables that have a breaking strength of over 14,000 lbs. each. This aircraft-quality cable was specifically designed for lifting applications and provides a great balance between abrasion resistance and fatigue.

### Built-in lubrication

Grease fittings are located on every sheave and sheave axle to help keep these critical parts well-lubricated and simplify periodic maintenance.

### Large base plates

10" x 12" base plates provide a solid foundation for every 14K capacity four-post car lift.

### Spring-loaded safety locks

Safety locks automatically engage continuously during rise, and adjustable safety ladders allow for precise runway leveling, even when installed on sloped floors.



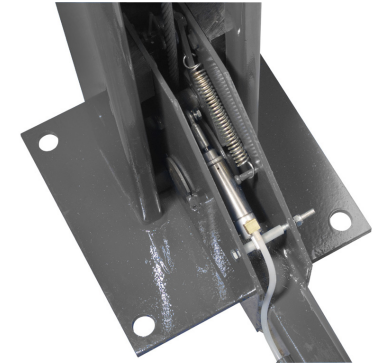
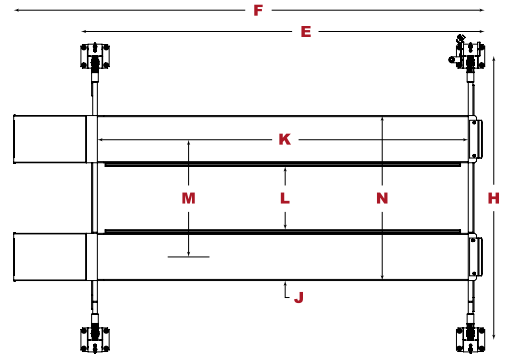
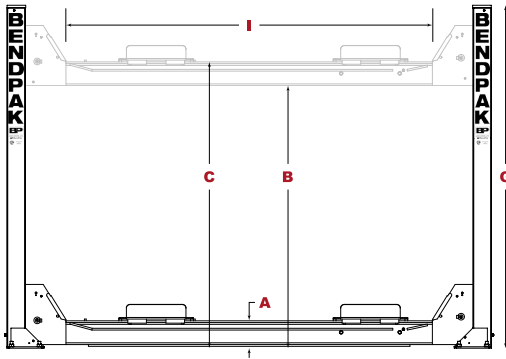
A John M. Ellsworth Company

John M. Ellsworth Co., Inc.

P.O. Box 240072  
8700 West Bradley Road  
Milwaukee, WI 53224

800-333-3331 PHONE

info@jmesales.com E-MAIL  
www.JMESales.com WEB



Model	HDS-14	HDS-14X	HD-14T
SKU#	5175170	5175173	5175004
Lifting Capacity	14,000 lbs. (6,350 kg)	14,000 lbs. (6,350 kg)	14,000 lbs. (6,350 kg)
A - Min. Runway Height	6.75" (171 mm)	6.75" (171 mm)	7.625" (194 mm)
B - Max. Rise	71.75" (1,822 mm)	69" (1,753 mm)	82" (2,083 mm)
C - Max. Lifting Height	77.5" (1,969 mm)	77.5" (1,969 mm)	86.5" (2,197 mm)
D - Overall Width	131.75" (3,346 mm)	131.75" (3,346 mm)	127.5" (3,239 mm)
E - Outside Length	213" (5,408 mm)	243" (6,172 mm)	205" (5,205 mm)
F - Overall Length	241" (6,131 mm)	271" (6,893 mm)	234" (5,927 mm)
G - Height of Columns	92" (2,337 mm)	92" (2,337 mm)	101" (2,543 mm)
H - Width Between Columns	120" (3,046 mm)	120" (3,046 mm)	115.5" (2,938 mm)
I - Drive-Thru Clearance	98" (2,482 mm)	98" (2,482 mm)	98" (2,482 mm)
J - Runway Width	20" (508 mm)	20" (508 mm)	20" (508 mm)
K - Length of Runways	199" (5,054 mm)	229" (5,816 mm)	195" (4,953 mm)
L - Width Between Runways	34.5" (876 mm) or 41.5" (1,054 mm)	34.5" (876 mm) or 41.5" (1,054 mm)	34.5" (876 mm) or 41.5" (1,054 mm)
M - Runway Centerline	54.5" (1,384 mm) or 61.5" (1,562 mm)	54.5" (1,384 mm) or 61.5" (1,562 mm)	54.5" (1,384 mm) or 61.5" (1,562 mm)
N - Outside Edge of Runways	74.5" (1,892 mm) or 81.5" (2,070 mm)	74.5" (1,892 mm) or 81.5" (2,070 mm)	74.5" (1,892 mm) or 81.5" (2,070 mm)
Min Wheelbase @ Rated Capacity	140" (3,556 mm)	170" (4,318 mm)	135" (3,429 mm)
Min Wheelbase @ 75% Capacity	120" (3,048 mm)	145" (3,683 mm)	115" (2,921 mm)
Min Wheelbase @ 50% Capacity	100" (2,540 mm)	120" (3,048 mm)	100" (2,540 mm)
Min Wheelbase @ 25% Capacity	80" (2,032 mm)	95" (2,413 mm)	80" (2,032 mm)
Locking Positions	13	13	16
Lock Spacing	every 4" (102 mm)	every 4" (102 mm)	every 4" (102 mm)
Lifting Time	60 sec	60 sec	65 sec
Motor	220 VAC / 60 Hz / 1 Ph	220 VAC / 60 Hz / 1 Ph	220 VAC / 60 Hz / 1 Ph
Shipping Weight	2,605 lbs. (1,182 kg)	2,705 lbs. (1,227 kg)	2,705 lbs. (1,227 kg)
Shipping Dimensions	212" x 24" x 40" (5,385 mm x 610 mm x 1,016 mm)	239" x 24" x 40" (6,071 mm x 610 mm x 1,016 mm)	239" x 24" x 40" (6,071 mm x 610 mm x 1,016 mm)



An air supply (minimum 30 psi / 3 CFM) is required for the safety-lock mechanisms to disengage. It is solely the responsibility of the end-user to provide, install and maintain the air supply.

Not all BendPak lift models meet the standards as prescribed by ANSI/ALI ALCTV-2017 or ANSI/UL 201. Consult [www.autolift.org](http://www.autolift.org) for a complete list or contact BendPak via [contact@bendpak.com](mailto:contact@bendpak.com).