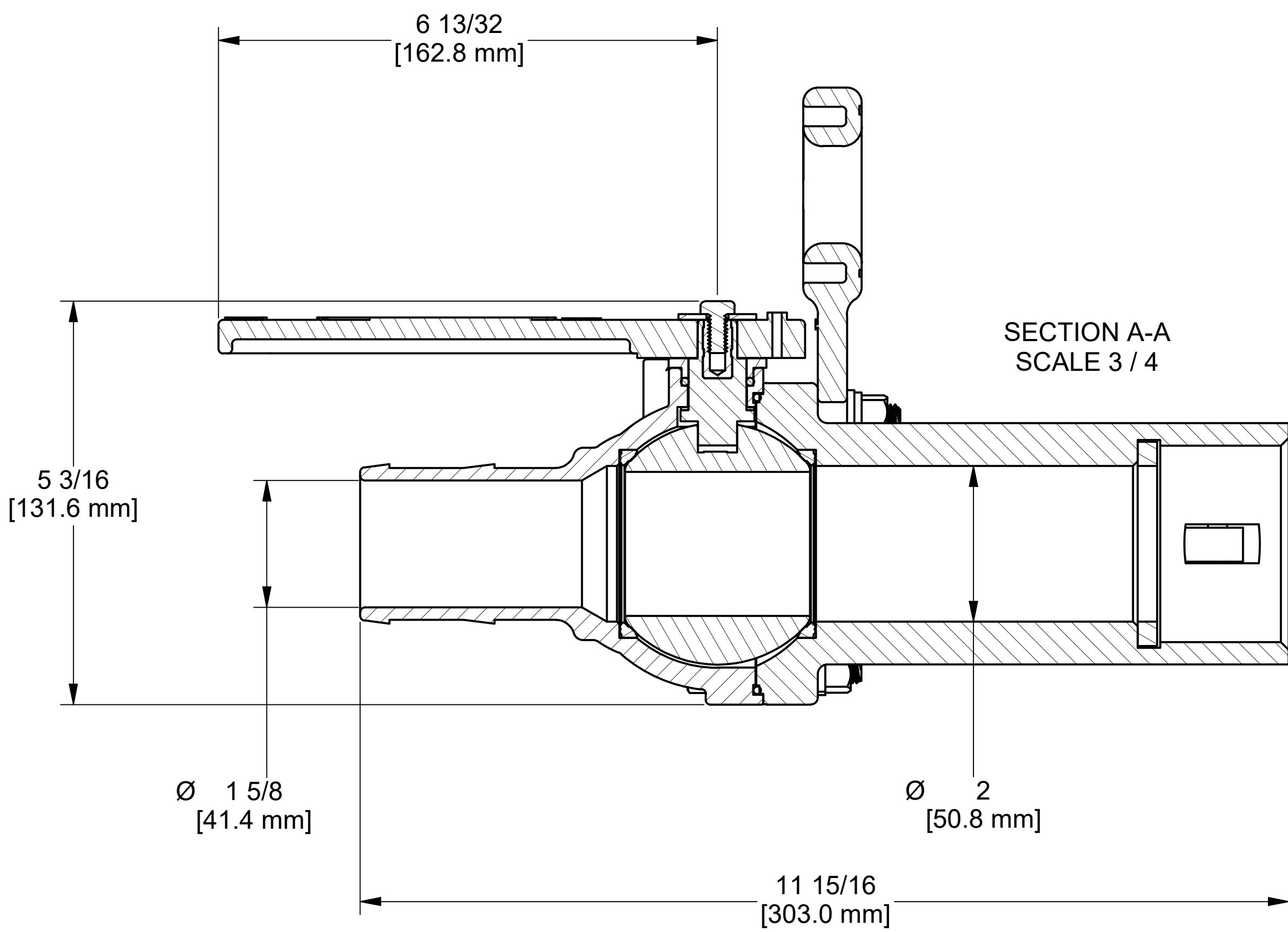
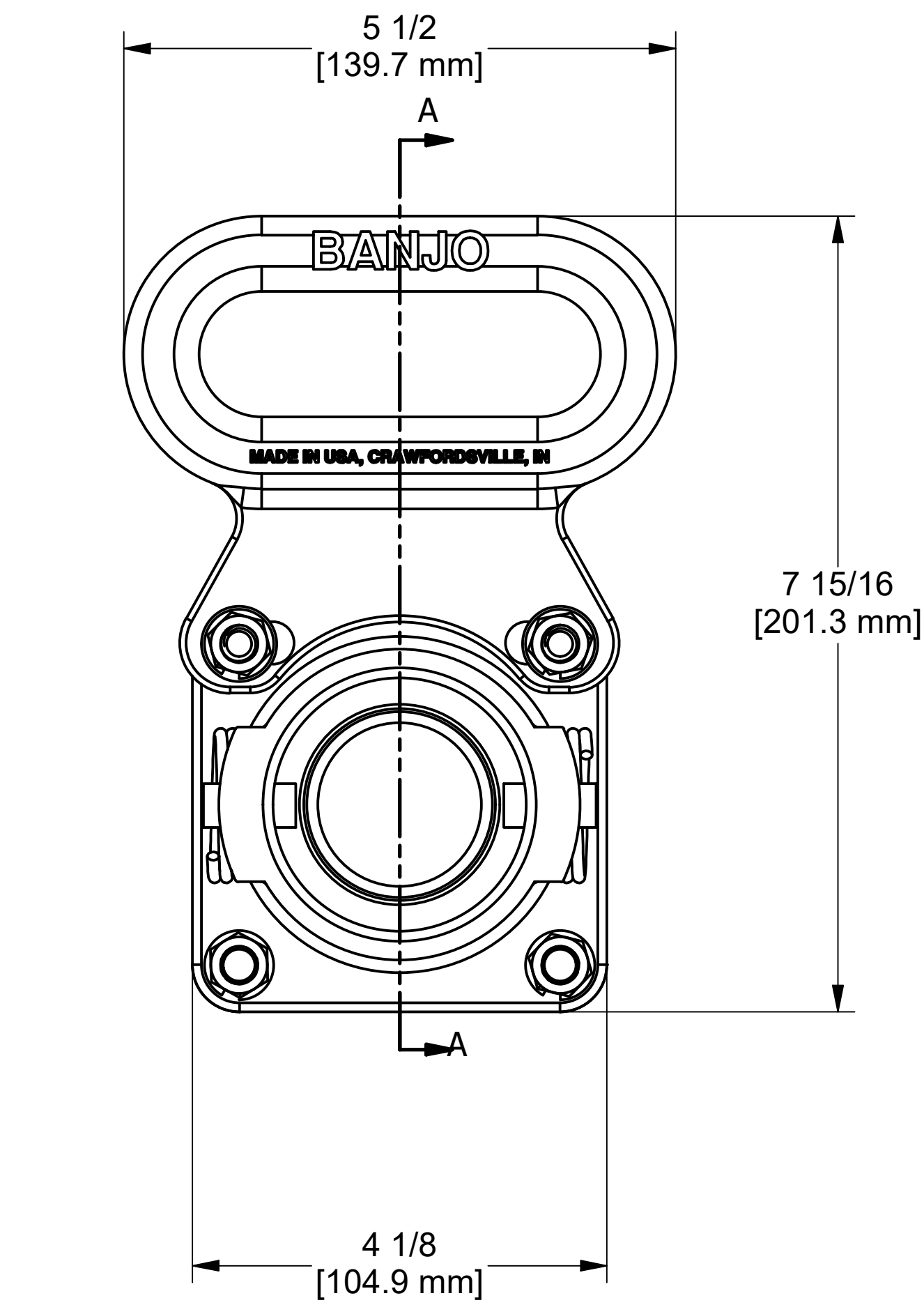
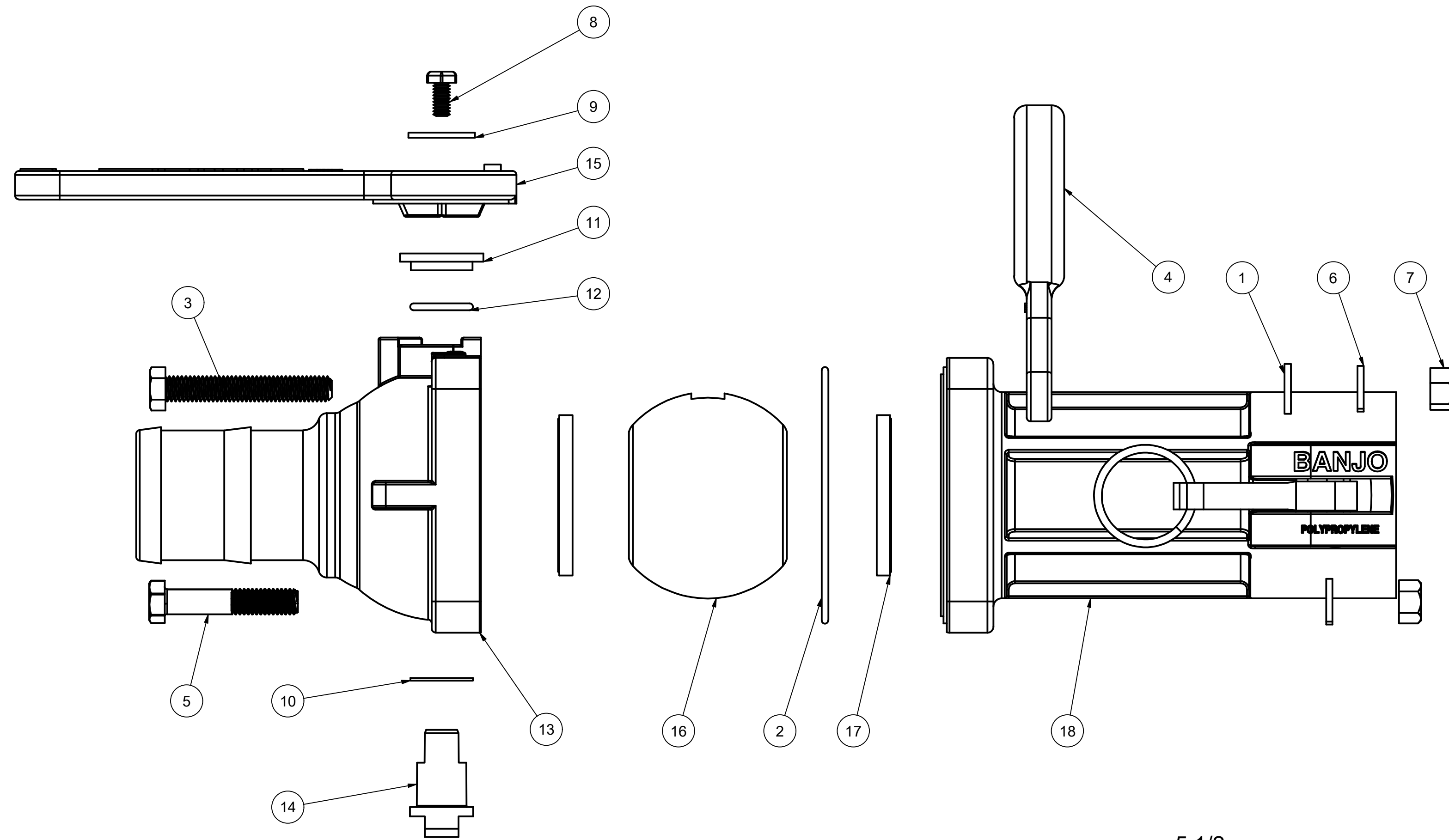


Parts List			
ITEM	QTY	PART NUMBER	DESCRIPTION
1	2	19766	3/8" FLAT WASHER
2	1	A93M250V	2.50 MM x 93 MM ID METRIC O-RING, FKM, BROWN
3	2	B038250	3/8-16 X 2 1/2" HHCS, ALL THD
4	1	H25053	2"-3" CARRY HANDLE
5	2	V20010SS	3/8-16 X 2" HHCS
6	4	V20018	3/8" LOCKWASHER
7	4	V20019	3/8-16 HEX NUT
8	1	V20020	2" handle Bolt
9	1	V20021	Handle Washer
10	1	V20060	VALVE STEM THRUST BEARING
11	1	V20159	2" STEM BUSHING
12	1	V20163	AS568A -116 O-RING, FKM, BROWN
13	1	VHB25254	2" FP HOSE BARB BODY
14	1	VS20151	2" STUBBY VALVE STEM
15	1	VS25153	2" FP STUBBY HANDLE
16	1	VS25255	2" Stubby Full Port Ball
17	2	VS25258AR1	2" FP BALL SEAT
18	1	VSB25356A	2" FP EP 200 Coupler



THIS DRAWING AND ALL INFORMATION CONTAINED THEREON ARE THE EXCLUSIVE PROPERTY OF BANJO CORPORATION.

UNLESS SPECIFICALLY NOTED, THIS DRAWING AND ITEMS SHOWN ON THIS DRAWING ARE SUBJECT TO CHANGE AT ANY TIME.

BANJO CORPORATION
 150 BANJO DRIVE, CRAWFORDSVILLE, IN 47933
 WEB SITE: WWW.BANJO.CORP.COM
 E-MAIL: BANJOSALES@IDEXCORP.COM

DESCRIPTION
2" FP STUBBY VALVE HB X FEMALE COUPLER W/ CARRY HANDLE

PART NUMBER
VSBHB205FP