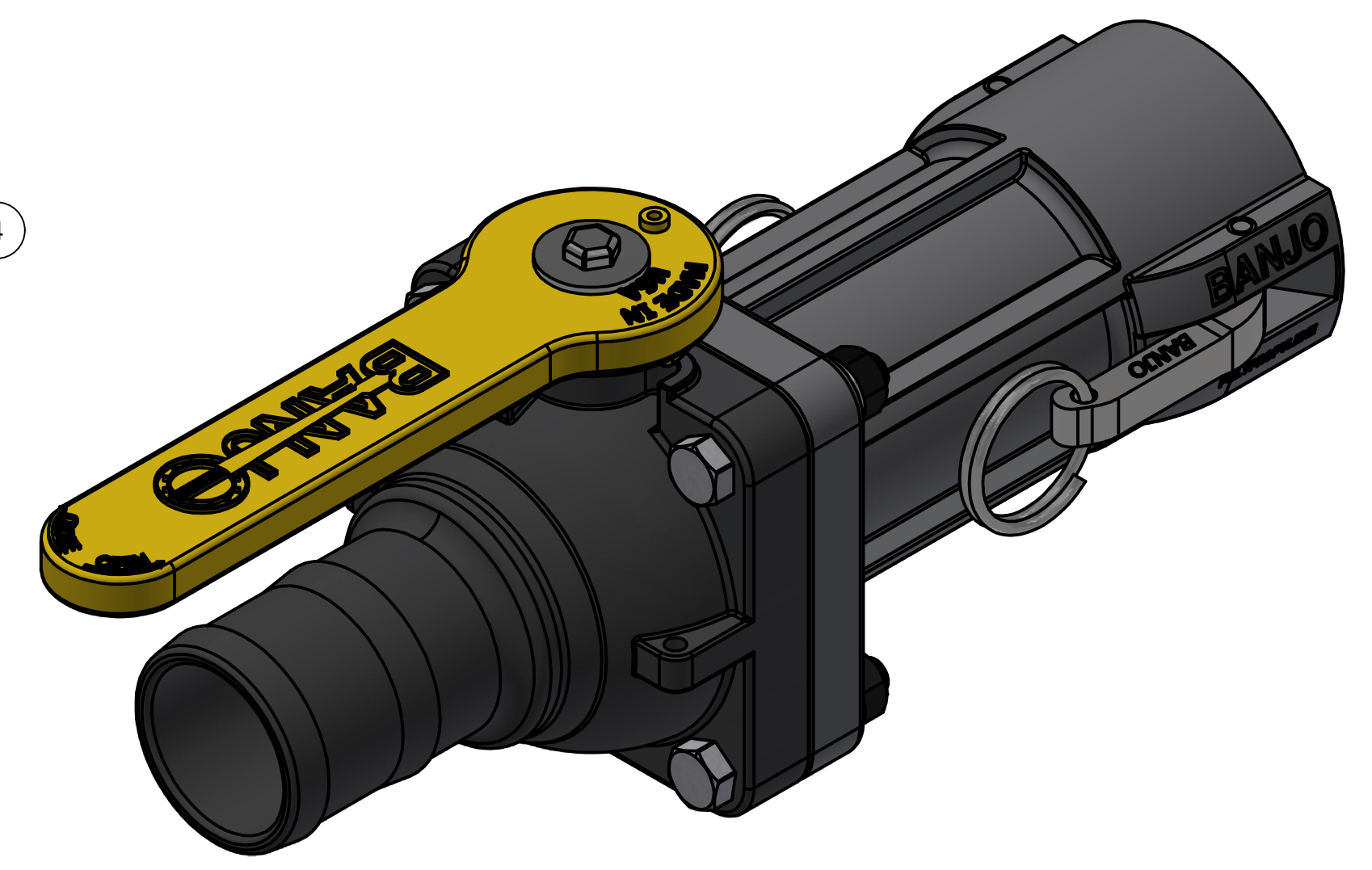
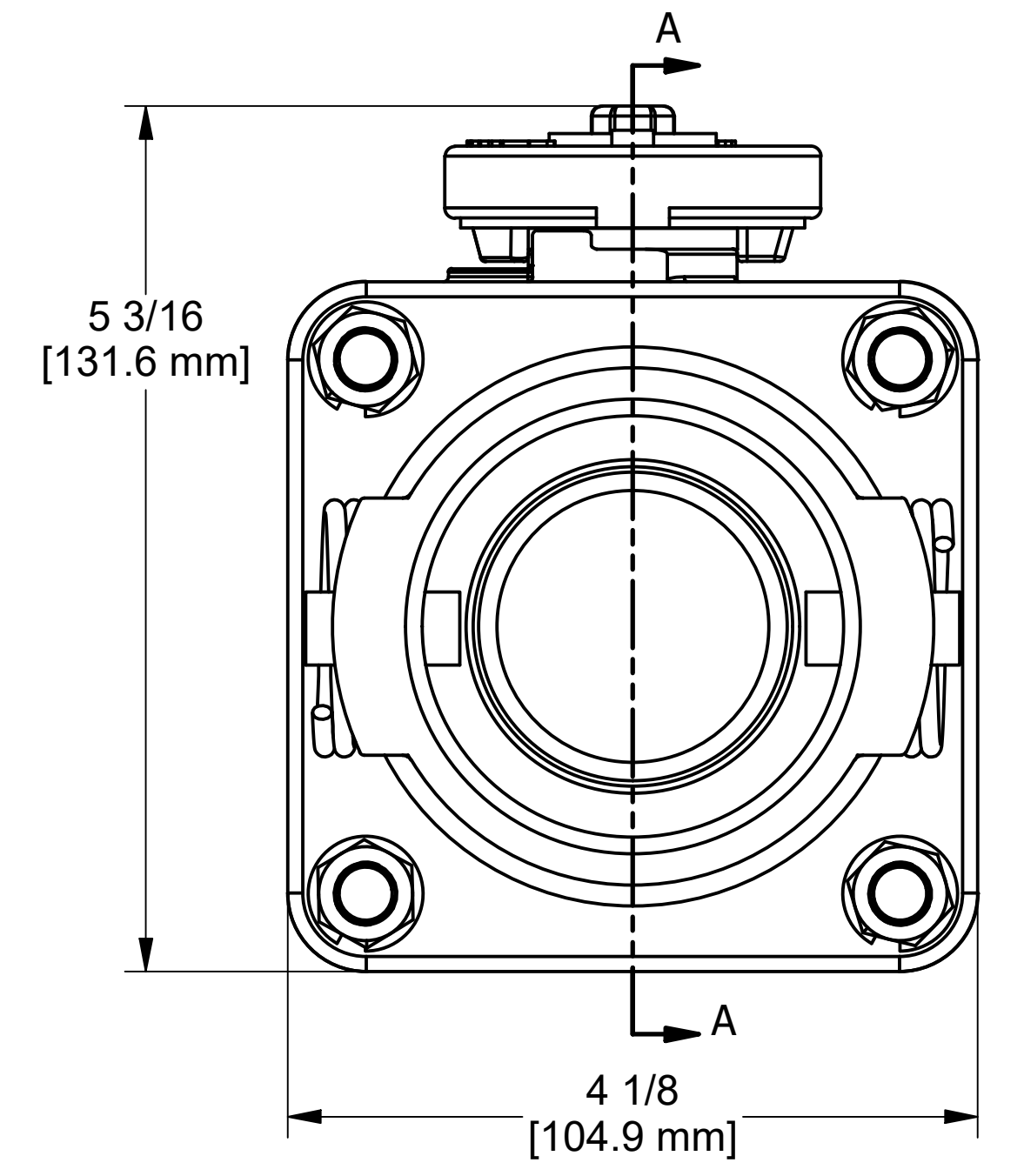
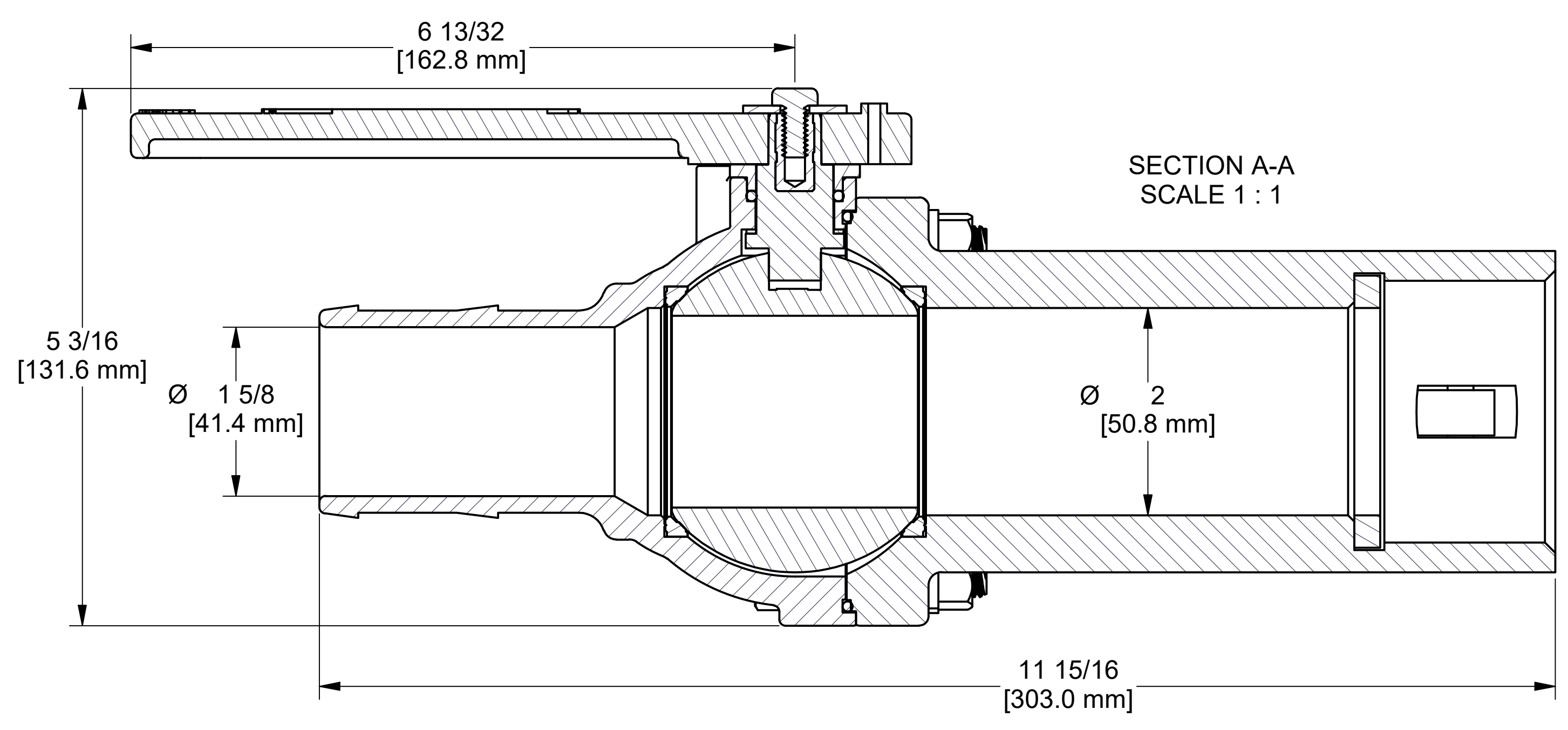


Parts List				
ITEM	QTY	PART NUMBER	DESCRIPTION	
1	1	A93M250V	2.50 MM x 93 MM ID METRIC O-RING, FKM, BROWN	
2	4	V20010SS	3/8-16 X 2" HHCS	
3	4	V20018	3/8" LOCKWASHER	
4	4	V20019	3/8-16 HEX NUT	
5	1	V20020	2" handle Bolt	
6	1	V20021	Handle Washer	
7	1	V20060	VALVE STEM THRUST BEARING	
8	1	V20159	2" STEM BUSHING	
9	1	V20163	AS568A -116 O-RING, FKM, BROWN	
10	1	VHB25254	2" FP HOSE BARB BODY	
11	1	VS20151	2" STUBBY VALVE STEM	
12	1	VS25153	2" FP STUBBY HANDLE	
13	1	VS25255	2" Stubby Full Port Ball	
14	2	VS25258AR1	2" FP BALL SEAT	
15	1	VSB25356A	2" FP EP 200 Coupler	



THIS DRAWING AND ALL INFORMATION CONTAINED THEREON ARE THE EXCLUSIVE PROPERTY OF BANJO CORPORATION.

UNLESS SPECIFICALLY NOTED, THIS DRAWING AND ITEMS SHOWN ON THIS DRAWING ARE SUBJECT TO CHANGE AT ANY TIME.

BANJO CORPORATION 150 BANJO DRIVE, CRAWFORDSVILLE, IN 47933 WEB SITE: WWW.BANJO.CORP.COM E-MAIL: BANJOSALES@IDEXCORP.COM	
DESCRIPTION	2" FP STUBBY VALVE HB x FEMALE COUPLER
PART NUMBER	VSBHB204FP