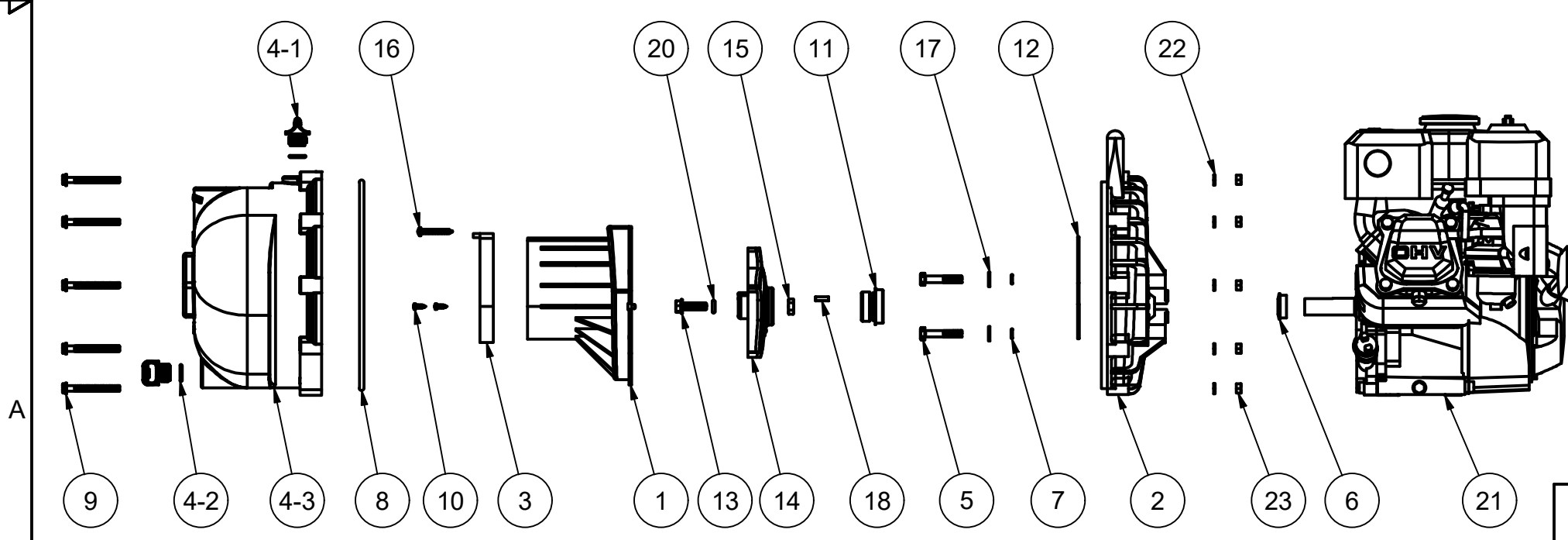


PARTS LIST			
ITEM	QTY	PART NUMBER	DESCRIPTION
1	1	12702A	2" POLY PUMP VOLUTE
2	1	12703A	POLY PUMP REAR BRACKET
3	1	12705	PUMP CHECKVALVE, EPDM
4	1	12712AP	2" POLY PUMP BODY
4-1	2	12777	1/2" DRAIN PLUG
4-2	2	UV15163	#114 O'RING, EPDM
4-3	1	X12712A	2" POLY PUMP BODY
5	4	12715A	5/16-24 X 1 3/4" HHCS WITH TORQ-PATCH
6	1	12716	PUMP SLINGER
7	4	12717	AS568A -011 O-RING, EPDM
8	1	12719A	AS568A -375 O-RING, EPDM, BLACK
9	10	12720	1/4-20 X 2 1/2" SL IND HWHS
10	2	12725	#6 X 1/2" PPH SMS
11	1	12733	MECHANICAL SEAL ASSY
12	1	12754	O'RING SEGMENT
13	1	12765A	5/16-24 X 1 1/8" HFS
14	1	12772	IMPELLER
15	1	12775A	7/16-14 HEX NUT
16	1	12900	#10 X 1 1/2" PPH SMS
17	4	12901	5/16" FLAT WASHER
18	1	12902A	3/16" SQ. X 5/8" KEY
19	1	12910	DECAL (N/S)
20	1	A204	AS568A -204 O-RING, EPDM, BLACK
21	1	E5HE	5.5 HP HONDA, ELEC. START
22	10	V07018	1/4" LOCKWASHER
23	10	V07019	1/4-20 HEX NUT



JME ELLSWORTH
A John M. Ellsworth Company
John M. Ellsworth Co., Inc.
 P.O. Box 240072
 8700 West Bradley Road
 Milwaukee, WI 53224
 800-333-3331 PHONE
 info@jmesales.com E-MAIL
 www.JMESales.com WEB

DESCRIPTION	2" POLY PUMP W/ 5.5 HP HONDA, ELEC. START
PART NUMBER	200PH-5E