

 <b>87000</b> Pag. 2.6	 <b>88020</b> Pag. 2.6	 <b>87010</b> Pag. 2.6	 <b>87010</b> Pag. 2.6	 <b>88030</b> Pag. 2.7	 <b>85040</b> Pag. 2.7	 <b>85111</b> Pag. 2.7	 <b>85116</b> Pag. 2.7	 <b>85130</b> Pag. 2.8
 <b>85140</b> Pag. 2.8	 <b>85150</b> Pag. 2.8	 <b>85160</b> Pag. 2.8	 <b>85170</b> Pag. 2.9	 <b>85180</b> Pag. 2.9	 <b>85211</b> Pag. 2.9	 <b>85216</b> Pag. 2.9	 <b>85223</b> Pag. 2.10	 <b>85226</b> Pag. 2.10
 <b>85230</b> Pag. 2.10	 <b>85240</b> Pag. 2.10	 <b>85310</b> Pag. 2.11	 <b>85320</b> Pag. 2.11	 <b>85325</b> Pag. 2.11	 <b>85330</b> Pag. 2.11	 <b>85340</b> Pag. 2.12	 <b>85350</b> Pag. 2.12	 <b>85360</b> Pag. 1.12
 <b>85500</b> Pag. 2.13	 <b>85510</b> Pag. 2.13	 <b>85520</b> Pag. 2.13	 <b>55410</b> Pag. 2.14	 <b>55420</b> Pag. 2.14	 <b>55430</b> Pag. 2.15	 <b>82241</b> Pag. 2.15	 <b>88610</b> Pag. 2.15	 <b>85620</b> Pag. 2.15
 <b>55625</b> Pag. 2.16	 <b>85700</b> Pag. 2.16	 <b>85705</b> Pag. 2.16	 <b>87800</b> Pag. 2.17	 <b>55801</b> Pag. 2.17	 <b>55802</b> Pag. 2.17	 <b>50980</b> Pag. 2.18	 <b>50990</b> Pag. 2.18	 <b>50006</b> Pag. 2.18

**TECHNOPOLYMER PUSH-TO-CONNECT FITTINGS**



**85 Series**



**TECHNICAL CHARACTERISTICS**



**Standard Reference**

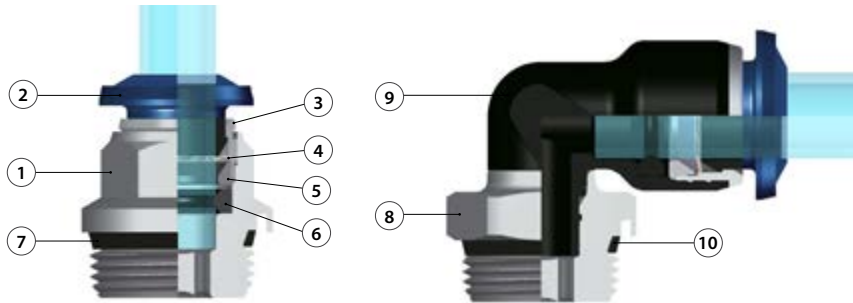
1907/2006  
**REACH** ✓

2011/65/CE  
**RoHS** ✓

PED  
2014/68/UE

ISO  
14743:2020

SILICON  
FREE



**Component Parts and Materials**

- 1 Nickel-plated brass Body
- 2 Acetalic resin Collet
- 3 Nickel-plated brass Capsule
- 4 Steel AISI 301 Clamping washer
- 5 Technopolymeric positioning ring
- 6 NBR Molded seal
- 7 NBR Thread packing
- 8 Base Threaded Nickel Plated Brass
- 9 Technopolymeric Body PA
- 10 NBR seal



**Pressure Rating**

Vacuum ~ 290 PSI  
-0.99 bar ~ 20 bar  
-0.099 MPa ~ 2.0 MPa



**Temperatures Rating**

NBR                      -4° F ~ 176° F  
                                  -20° C ~ 80° C



**Media**

- Compressed Air
- Vacuum
- Water

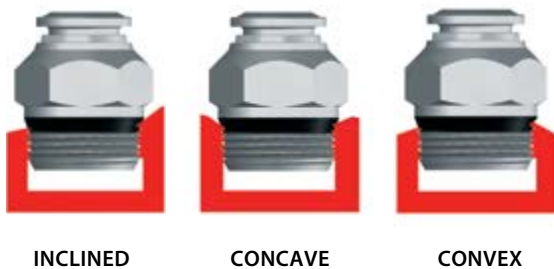


**Tubing Compatibility**

Nylon 6 - 11 -12  
Polyethylene  
Polyurethane ("98 Shore A for best result)  
PTFE  
FEP



**One fitting... Endless possibilities**



**Torque Specifications**

Recommended Torque		
Thread Size	Min.	Max.
1/8	5 Nm	7 Nm
1/4	5 Nm	7 Nm
3/8	5 Nm	7 Nm
1/2	5 Nm	7 Nm

All SWIFFIT fittings have been equipped with threads and an NBR thread seal that will universally connect to all thread types. Our SWIFFIT universal fittings also work on non-flat surfaces without compromising its air-tight seal.



## UNF Threads

Standard USA design

Designed for use in UNF connections with an integrated NBR o-ring that provides a perfect seal

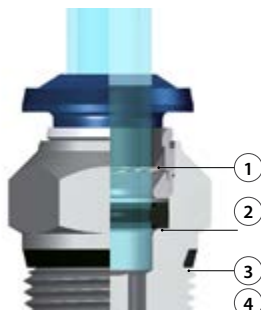


### Torque Specifications

Thread Size	Recommended Torque	
	Min.	Breaking torque
10/32	0.8 Nm	3.2 Nm



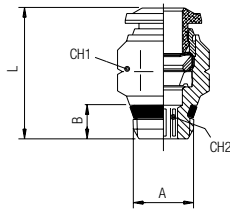
## Advantages



### Advantages

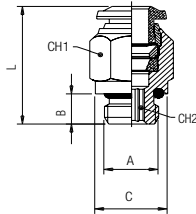
- 1 The washer is made in stainless steel ensures the perfect tube clamping with every Kinds of materials without damage the surface. The connection between the tube and the fitting ensure a total tightness even in severe conditions such as impact and vibrations.
- 2 The particular geometric shape of the seal ensure the perfect tightness even with vacuum.
- 3 All of threads from this range have been equipped with tightening parts which allow the direct assembly of the fittings, reducing the installation time.
- 4 All the straight fittings can be assembled also with Allen wrench and it is possible to use them in reduced spaces.
- 5 Orienting fitting with safety ring Inside. Improved durability to the rotation and traction.

**87000**  
STRAIGHT MALE



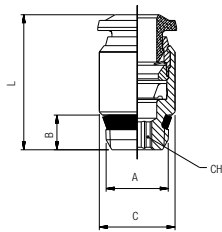
\* For part numbers with 10-32 threads  
**88020**

**UNF**



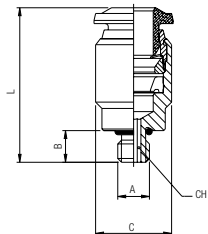
Code	Part No.	Tube	A	B	C	L	CH1	CH2	Pack
*88020 00 001	*88020-02-32	1/8 10/32	.157 (4)	.310 (8)	.787 (18)	.315 (8)	.079 (2)	10	
87000 00 001	87000-02-02	1/8 1/8	.217 (5,5)	-	.650 (16,5)	.433 (11)	.079 (2)	10	
87000 00 002	87000-02-04	1/8 1/4	.276 (7)	-	.728 (18,5)	.551 (14)	.079 (2)	10	
*88020 00 002	*88020-53-32	5/32 (4) 10/32	.157 (4)	.310 (8)	.827 (21)	.394 (10)	.079 (2)	10	
87000 00 003	87000-53-02	5/32 (4) 1/8	.217 (5)	-	.708 (18)	.433 (11)	.118 (3)	10	
87000 00 004	87000-53-04	5/32 (4) 1/4	.276 (7)	-	.767 (19,5)	.551 (14)	.118 (3)	10	
*88020 00 003	*88020-04-32	1/4 10/32	.157 (4)	.390 (10)	.925 (23,5)	.512 (13)	.079 (2)	10	
87000 00 005	87000-04-02	1/4 1/8	.217 (5)	-	.866 (22)	.512 (13)	.157 (4)	10	
87000 00 006	87000-04-04	1/4 1/4	.276 (7)	-	.826 (21)	.551 (14)	.157 (4)	10	
87000 00 007	87000-04-06	1/4 3/8	.295 (7,5)	-	.826 (21)	.669 (17)	.157 (4)	10	
87000 00 008	87000-05-02	5/16 (8) 1/8	.217 (5)	-	.964 (24,5)	.551 (14)	.197 (5)	10	
87000 00 009	87000-05-04	5/16 (8) 1/4	.276 (7)	-	.866 (22)	.551 (14)	.236 (6)	10	
87000 00 010	87000-05-06	5/16 (8) 3/8	.295 (7,5)	-	.905 (23)	.669 (17)	.236 (6)	10	
87000 00 011	87000-06-02	3/8 1/8	.217 (5)	-	1.122 (28,5)	.669 (17)	.197 (5)	10	
87000 00 012	87000-06-04	3/8 1/4	.276 (7)	-	1.122 (28,5)	.669 (17)	.276 (6)	10	
87000 00 013	87000-06-06	3/8 3/8	.295 (7,5)	-	1.043 (26,5)	.669 (17)	.276 (6)	10	
87000 00 014	87000-06-08	3/8 1/2	.354 (9)	-	1.043 (26,5)	.827 (21)	.276 (6)	10	
87000 00 018	87000-08-02	1/2 1/8	.217 (5)	-	1.299 (33)	.787 (20)	.197 (5)	10	
87000 00 015	87000-08-04	1/2 1/4	.276 (7)	-	1.299 (33)	.787 (20)	.197 (5)	10	
87000 00 016	87000-08-06	1/2 3/8	.295 (7,5)	-	1.259 (32)	.787 (20)	.354 (9)	10	
87000 00 017	87000-08-08	1/2 1/2	.354 (9)	-	1.259 (32)	.827 (21)	.394 (10)	10	

**87010**  
STRAIGHT MALE WITH INTERNAL HEX



\* For part numbers with 10-32 threads

**UNF**

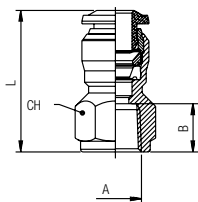


Code	Part No.	Tube	A	B	C	L	CH	Pack
*87010 00 001	*87010-02-32	1/8 10/32	.157 (4)	.315 (8)	.709 (18)	.098 (2,5)	10	
*87010 00 002	*87010-53-32	5/32 (4) 10/32	.157 (4)	.394 (10)	.787 (20)	.098 (2,5)	10	
87010 00 003	87010-53-02	5/32 (4) 1/8	.217 (5)	.374 (9,5)	.709 (18)	.118 (3)	10	
*87010 00 004	*87010-04-32	1/4 10/32	.157 (4)	.473 (12)	.925 (23,5)	.098 (2,5)	10	
87010 00 005	87010-04-02	1/4 1/8	.217 (5)	.473 (12)	.846 (21,5)	.157 (4)	10	
87010 00 006	87010-04-04	1/4 1/4	.2767 (7)	.551 (14)	.846 (21,5)	.157 (4)	10	

**88030**

STRAIGHT FEMALE

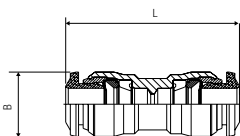
**NPTF**



Code	Part No.	Tube	A	B	L	CH	Pack
88030 00 001	88030-02-02	1/8	1/8	.374 (9,5)	.945 (24)	.512 (13)	10
88030 00 002	88030-02-04	1/8	1/4	.531 (13,5)	1.142 (29)	.630 (16)	10
88030 00 003	88030-53-02	5/32 (4)	1/8	.374 (9,5)	.984 (25)	.512 (13)	10
88030 00 004	88030-53-04	5/32 (4)	1/4	.531 (13,5)	1.181 (30)	.630 (16)	10
88030 00 005	88030-04-02	1/4	1/8	.374 (9,5)	1.082 (27,5)	.512 (13)	10
88030 00 006	88030-04-04	1/4	1/4	.512 (13)	1.279 (32,5)	.630 (16)	10
88030 00 007	88030-06-04	3/8	1/4	.531 (13,5)	1.397 (35,5)	.709 (18)	10
88030 00 008	88030-06-06	3/8	3/8	.531 (13,5)	1.397 (35,5)	.787 (20)	10

**85040**

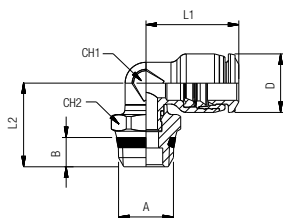
UNION



Code	Part No.	Tube	Tube	B	L	Pack
85040 00 001	85040-02-02	1/8	1/8	.394 (10)	1.102 (28)	10
85040 00 002	85040-53-53	5/32 (4)	5/32 (4)	.394 (10)	1.220 (31)	10
85040 00 004	85040-04-53	1/4	5/32 (4)	.492 (12,5)	1.358 (34,5)	10
85040 00 005	85040-04-04	1/4	1/4	.492 (12,5)	1.377 (35)	10
85040 00 014	85040-05-53	5/16 (8)	5/32 (4)	1.456 (37)	.551 (14)	10
85040 00 006	85040-05-04	5/16 (8)	1/4	.551 (14)	1.496 (38)	10
85040 00 007	85040-05-05	5/16 (8)	5/16 (8)	.551 (14)	1.456 (37)	10
85040 00 008	85040-06-04	3/8	1/4	.669 (17)	1.751 (44,5)	10
85040 00 009	85040-06-05	3/8	5/16 (8)	.669 (17)	1.751 (44,5)	10
85040 00 010	85040-06-06	3/8	3/8	.669 (17)	1.771 (45)	10
85040 00 013	85040-08-05	1/2	5/16 (8)	1.968 (50)	.787 (20)	10
85040 00 011	85040-08-06	1/2	3/8	.787 (20)	1.968 (50)	10
85040 00 012	85040-08-08	1/2	1/2	.787 (20)	1.929 (49)	10

**85111**

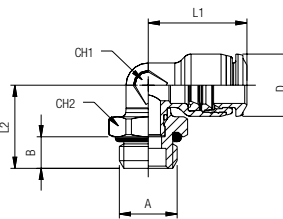
Swivel Elbow



Code	Part No.	Tube	A	B	L1	L2	CH1	CH2	D	Pack
85111 00 001	85111-02-02	1/8	1/8	.216 (5,5)	.610 (15)	.649 (16,5)	.275 (7)	.511 (13)	.393 (10)	10
85111 00 002	85111-02-04	1/8	1/4	.275 (7)	.610 (15)	.708 (18)	.275 (7)	.591 (15)	.393 (10)	10
*85116 00 001	*85116-53-32	5/32 (4)	10/32	.157 (4)	.649 (16,5)	.567 (14,5)	.275 (7)	.354 (9)	.393 (10)	10
85111 00 003	85111-53-02	5/32 (4)	1/8	.216 (5,5)	.649 (16,5)	.649 (16,5)	.275 (7)	.511 (13)	.393 (10)	10
85111 00 004	85111-53-04	5/32 (4)	1/4	.275 (7)	.649 (16,5)	.708 (18)	.275 (7)	.591 (15)	.393 (10)	10
*85116 00 002	*85116-04-32	1/4	10/32	.157 (4)	.807 (20,5)	.610 (15,5)	.354 (9)	.354 (9)	.492 (12,5)	10
85111 00 006	85111-04-02	1/4	1/8	.216 (5,5)	.807 (20,5)	.688 (17,5)	.354 (9)	.511 (13)	.492 (12,5)	10
85111 00 007	85111-04-04	1/4	1/4	.275 (7)	.807 (20,5)	.748 (19)	.354 (9)	.591 (15)	.492 (12,5)	10
85111 00 008	85111-04-06	1/4	3/8	.295 (7,5)	.807 (20,5)	.787 (20)	.354 (9)	.669 (17)	.492 (12,5)	10
85111 00 009	85111-04-08	1/4	1/2	.354 (9)	.807 (20,5)	.866 (22)	.354 (9)	.826 (21)	.492 (12,5)	10
85111 00 010	85111-05-02	5/16 (8)	1/8	.216 (5,5)	.866 (22)	.728 (18,5)	.394 (10)	.511 (13)	.551 (14)	10
85111 00 011	85111-05-04	5/16 (8)	1/4	.275 (7)	.866 (22)	.787 (20)	.394 (10)	.591 (15)	.551 (14)	10
85111 00 012	85111-05-06	5/16 (8)	3/8	.295 (7,5)	.866 (22)	.807 (20,5)	.394 (10)	.669 (17)	.551 (14)	10
85111 00 013	85111-05-08	5/16 (8)	1/2	.354 (9)	.866 (22)	.905 (23)	.394 (10)	.826 (21)	.551 (14)	10
85111 00 014	85111-06-04	3/8	1/4	.275 (7)	1.043 (26,5)	.866 (22)	.551 (13)	.629 (16)	.669 (17)	10
85111 00 015	85111-06-06	3/8	3/8	.295 (7,5)	1.043 (26,5)	.866 (22)	.551 (13)	.669 (17)	.669 (17)	10
85111 00 016	85111-06-08	3/8	1/2	.354 (9)	1.043 (26,5)	.964 (24,5)	.551 (13)	.826 (21)	.669 (17)	10
85111 00 017	85111-08-04	1/2	1/4	.275 (7)	1.200 (30,5)	.905 (23)	.629 (16)	.629 (16)	.787 (20)	10
85111 00 018	85111-08-06	1/2	3/8	.295 (7,5)	1.200 (30,5)	.905 (23)	.629 (16)	.669 (17)	.787 (20)	10
85111 00 019	85111-08-08	1/2	1/2	.354 (9)	1.200 (30,5)	1.003 (25,5)	.629 (16)	.826 (21)	.787 (20)	10

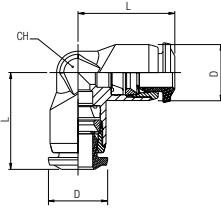
\* For part numbers with 10-32 threads  
85116

**UNF**



**85130**

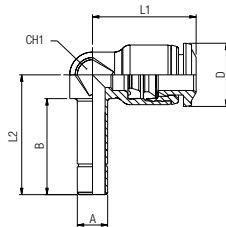
Union Elbow



Code	Part No.	Tube	Tube	L	CH	D	Pack
85130 00 001	85130-02-02	1/8	1/8	.610 (15,5)	.354 (9)	.393 (10)	10
85130 00 002	85130-53-53	5/32 (4)	5/32 (4)	.649 (16,5)	.354 (9)	.393 (10)	10
85130 00 004	85130-04-04	1/4	1/4	.807 (20,5)	.433 (11)	.492 (12,5)	10
85130 00 009	85130-05-04	5/16 (8)	1/4	.886 (22,5)	.551 (14)	.511 (13)	10
85130 00 005	85130-05-05	5/16 (8)	5/16 (8)	.866 (22)	.511 (13)	.551 (14)	10
85130 00 012	85130-06-04	3/8	1/4	1.023 (26)	.669 (17)	.629 (16)	10
85130 00 010	85130-06-05	3/8	5/16 (8)	1.023 (26)	.669 (17)	.629 (16)	10
85130 00 006	85130-06-06	3/8	3/8	1.043 (26,5)	.629 (16)	.669 (17)	10
85130 00 011	85130-08-06	1/2	3/8	1.200 (30,5)	.787 (20)	.748 (19)	10
85130 00 007	85130-08-08	1/2	1/2	1.200 (30,5)	.787 (20)	.787 (20)	10

**85140**

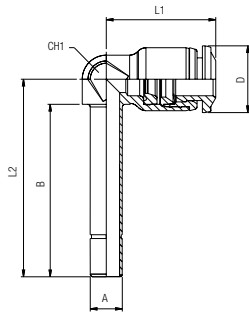
Elbow Plug In



Code	Part No.	Tube	A	B	L1	L2	CH1	D	Pack
85140 00 001	85140-53-53	5/32 (4)	5/32 (4)	.669 (17)	.650 (16,5)	.819 (20,8)	.276 (7)	.394 (10)	10
85140 00 002	85140-53-04	5/32 (4)	1/4	.748 (19)	.650 (16,5)	.913 (23)	.276 (7)	.394 (10)	10
85140 00 006	85140-04-53	1/4	5/32 (4)	.669 (17)	.807 (20,5)	.846 (21,5)	.354 (9)	.492 (12,5)	10
85140 00 005	85140-04-04	1/4	1/4	.748 (19)	.807 (20,5)	.933 (23,5)	.354 (9)	.492 (12,5)	10
85140 00 012	85140-04-05	1/4	5/16 (8)	.787 (20)	.886 (22,5)	1.024 (26)	.394 (10)	.551 (14)	10
85140 00 007	85140-05-05	5/16 (8)	5/16 (8)	.787 (20)	.866 (22)	1.024 (26)	.394 (10)	.551 (14)	10
85140 00 008	85140-05-06	5/16 (8)	3/8	.866 (22)	.866 (22)	1.083 (27,5)	.394 (10)	.551 (14)	10
85140 00 009	85140-06-06	3/8	3/8	.886 (22,5)	1.043 (26,5)	1.181 (30)	.512 (13)	.669 (17)	10
85140 00 010	85140-06-08	3/8	1/2	.964 (24,5)	1.043 (26,5)	1.260 (32)	.512 (13)	.669 (17)	10
85140 00 011	85140-08-08	1/2	1/2	1.004 (25,5)	1.181 (30)	1.319 (33,5)	.630 (16)	.787 (20)	10

**85150**

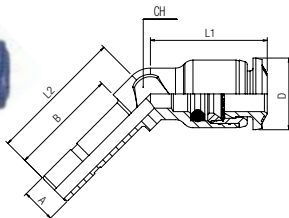
Elbow Plug In



Code	Part No.	Tube	A	B	L1	L2	CH1	D	Pack
85150 00 001	85150-53-53	5/32 (4)	5/32 (4)	1.102 (28)	.650 (16,5)	1.252 (31,8)	.276 (7)	.394 (10)	10
85150 00 002	85150-53-04	5/32 (4)	1/4	1.200 (30,5)	.650 (16,5)	1.359 (34,5)	.276 (7)	.394 (10)	10
85150 00 006	85150-04-53	1/4	5/32 (4)	1.181 (30)	.807 (20,5)	1.359 (34,5)	.354 (9)	.492 (12,5)	10
85150 00 005	85150-04-04	1/4	1/4	1.272 (32,3)	.807 (20,5)	1.457 (37)	.354 (9)	.492 (12,5)	10
85150 00 007	85150-05-05	5/16 (8)	5/16 (8)	1.417 (36)	.866 (22)	1.654 (42)	.394 (10)	.551 (14)	10
85150 00 008	85150-05-06	5/16 (8)	3/8	1.477 (37,5)	.866 (22)	1.694 (43)	.394 (10)	.551 (14)	10
85150 00 009	85150-06-06	3/8	3/8	1.606 (40,8)	1.043 (26,5)	1.902 (48,3)	.512 (13)	.669 (17)	10
85150 00 010	85150-06-08	3/8	1/2	1.692 (43)	1.043 (26,5)	1.988 (50,5)	.512 (13)	.669 (17)	10
85150 00 011	85150-08-08	1/2	1/2	1.850 (47)	1.220 (31)	2.165 (55)	.630 (16)	.787 (20)	10

**85160**

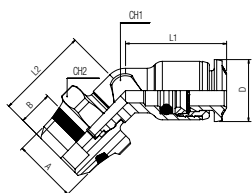
45° ELBOW PLUG IN



Code	Part No.	Tube	A	B	L1	L2	CH	D	Pack
85160 00 002	85160-53	5/32 (4)	5/32 (4)	.669 (17)	.492 (12,5)	.827 (21)	.276 (7)	.394 (10)	10
85160 00 004	85160-04	1/4	1/4	.748 (19)	.807 (20,5)	.925 (23,5)	.354 (9)	.472 (12)	10
85160 00 005	85160-05	5/16 (8)	5/16 (8)	.787 (20)	.866 (22)	.984 (25)	.394 (10)	.551 (14)	10
85160 00 006	85160-06	3/8	3/8	.886 (22,5)	1.043 (26,5)	1.181 (30)	.512 (13)	.669 (17)	10
85160 00 007	85160-08	1/2	1/2	1.004 (25,5)	1.181 (30)	1.319 (33,5)	.630 (16)	.787 (20)	10

**85170**

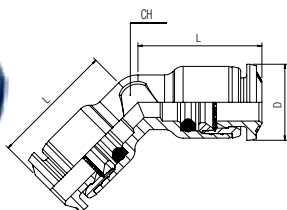
45° Swivel Elbow



Code	Part No.	Tube	A	B	L1	L2	CH1	CH2	D	Pack
85170 00 001	85170-53-02	5/32 (4)	1/8	.217 (5,5)	.492 (12,5)	.650 (16,5)	.276 (7)	.512 (13)	.394 (10)	10
85170 00 006	85170-04-02	1/4	1/8	.217 (5,5)	.807 (20,5)	.689 (17,5)	.354 (9)	.512 (13)	.472 (12)	10
85170 00 007	85170-04-04	1/4	1/4	.276 (7)	.807 (20,5)	.744 (18,9)	.354 (9)	.591 (15)	.472 (12)	10
85170 00 008	85170-05-02	5/16 (8)	1/8	.217 (5,5)	.866 (22)	.728 (18,5)	.394 (10)	.512 (13)	.551 (14)	10
85170 00 009	85170-05-04	5/16 (8)	1/4	.276 (7)	.866 (22)	.787 (20)	.394 (10)	.591 (15)	.551 (14)	10
85170 00 010	85170-05-06	5/16 (8)	3/8	.295 (7,5)	.866 (22)	.807 (20,5)	.394 (10)	.669 (17)	.551 (14)	10
85170 00 014	85170-06-04	3/8	1/4	.276 (7)	1.043 (26,5)	.858 (21,8)	.512 (13)	.630 (16)	.669 (17)	10
85170 00 015	85170-06-06	3/8	3/8	.295 (7,5)	1.043 (26,5)	.858 (21,8)	.512 (13)	.669 (17)	.669 (17)	10
85170 00 016	85170-06-08	3/8	1/2	.354 (9)	1.043 (26,5)	.964 (24,5)	.512 (13)	.827 (21)	.669 (17)	10
85170 00 017	85170-08-04	1/2	1/4	.276 (7)	1.181 (30)	.909 (23,1)	.630 (16)	.630 (16)	.787 (20)	10
85170 00 018	85170-08-06	1/2	3/8	.295 (7,5)	1.181 (30)	.909 (23,1)	.630 (16)	.669 (17)	.787 (20)	10
85170 00 019	85170-08-08	1/2	1/2	.354 (9)	1.181 (30)	1.003 (25,5)	.630 (16)	.827 (21)	.787 (20)	10

**85180**

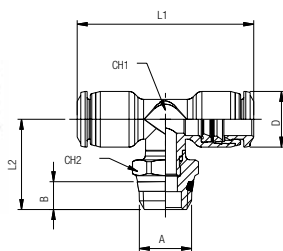
45° UNION



Code	Part No.	Tube	L	CH	D	Pack
85180 00 002	85180-53	5/32 (4)	.650 (16,5)	.276 (7)	.394 (10)	10
85180 00 004	85180-04	1/4	.807 (20,5)	.354 (9)	.472 (12)	10
85180 00 005	85180-05	5/16 (8)	.866 (22)	.394 (10)	.551 (14)	10
85180 00 006	85180-06	3/8	1.043 (26,5)	.512 (13)	.669 (17)	10
85180 00 007	85180-08	1/2	1.181 (30)	.630 (16)	.787 (20)	10

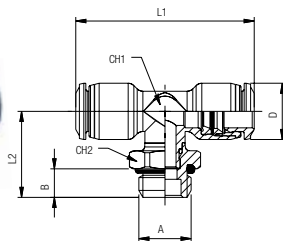
**85211**

Swivel Branch Tee



\* For part numbers with 10-32 threads  
**85216**

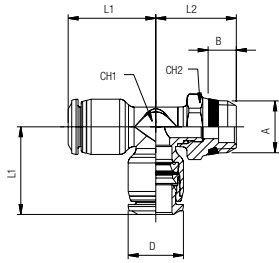
**UNF**



Code	Part No.	Tube	A	B	L1	L2	CH1	CH2	D	Pack
85211 00 001	85211-02-02	1/8	1/8	.216 (5,5)	1.200 (30,5)	.728 (18,5)	.275 (7)	.511 (13)	.393 (10)	10
85211 00 002	85211-02-04	1/8	1/4	.275 (7)	1.200 (30,5)	.787 (20)	.275 (7)	.590 (15)	.393 (10)	10
*85216 00 001	*85216-53-32	5/32 (4)	10/32	.157 (4)	1.200 (30,5)	.629 (16)	.275 (7)	.354 (9)	.393 (10)	10
85211 00 003	85211-53-02	5/32 (4)	1/8	.216 (5,5)	1.299 (33)	.728 (18,5)	.275 (7)	.511 (13)	.393 (10)	10
85211 00 004	85211-53-04	5/32 (4)	1/4	.275 (7)	1.299 (33)	.787 (20)	.275 (7)	.590 (15)	.393 (10)	10
*85216 00 002	*85216-04-32	1/4	10/32	.157 (4)	1.594 (40,5)	.610 (15,5)	.354 (9)	.354 (9)	.492 (12,5)	10
85211 00 006	85211-04-02	1/4	1/8	.216 (5,5)	1.594 (40,5)	.787 (20)	.354 (9)	.511 (13)	.492 (12,5)	10
85211 00 007	85211-04-04	1/4	1/4	.275 (7)	1.594 (40,5)	.846 (21,5)	.354 (9)	.590 (15)	.492 (12,5)	10
85211 00 008	85211-05-02	5/16 (8)	1/8	.216 (5,5)	1.732 (44)	.826 (21)	.394 (10)	.511 (13)	.551 (14)	10
85211 00 009	85211-05-04	5/16 (8)	1/4	.275 (7)	1.732 (44)	.885 (22,5)	.394 (10)	.590 (15)	.551 (14)	10
85211 00 010	85211-05-06	5/16 (8)	3/8	.295 (7,5)	1.732 (44)	.905 (23)	.394 (10)	.669 (17)	.551 (14)	10
85211 00 011	85211-06-04	3/8	1/4	.275 (7)	2.086 (53)	1.023 (26)	.551 (13)	.629 (16)	.669 (17)	10
85211 00 012	85211-06-06	3/8	3/8	.295 (7,5)	2.086 (53)	1.023 (26)	.551 (13)	.669 (17)	.669 (17)	10
85211 00 013	85211-06-08	3/8	1/2	.354 (9)	2.086 (53)	1.023 (26)	.551 (13)	.826 (21)	.669 (17)	10
85211 00 014	85211-08-04	1/2	1/4	.275 (7)	2.362 (60)	1.062 (27)	.629 (16)	.629 (16)	.787 (20)	10
85211 00 015	85211-08-06	1/2	3/8	.295 (7,5)	2.362 (60)	1.062 (27)	.629 (16)	.669 (17)	.787 (20)	10
85211 00 016	85211-08-08	1/2	1/2	.354 (9)	2.362 (60)	1.161 (29,5)	.629 (16)	.826 (21)	.787 (20)	10

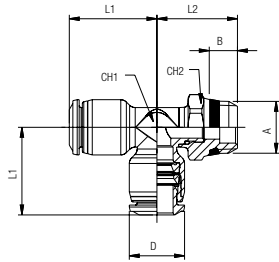
**85223**

Swivel Run Tee



**\* For part numbers with 10-32 threads  
85226**

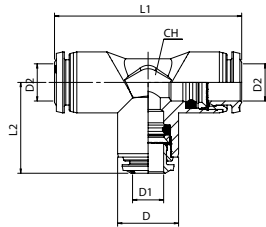
**UNF**



Code	Part No.	Tube	A	B	L1	L2	CH1	CH2	D	Pack
85211 00 001	85223-02-02	1/8	1/8	.216 (5,5)	.610 (15)	.708 (18)	.275 (7)	.511 (13)	.393 (10)	10
85211 00 002	85223-02-04	1/8	1/4	.275 (7)	.610 (15)	.767 (19,5)	.275 (7)	.590 (15)	.393 (10)	10
*85216 00 001	*85226-53-32	5/32 (4)	10/32	.157 (4)	.649 (16,5)	.629 (16)	.275 (7)	.354 (9)	.393 (10)	10
85211 00 003	85223-53-02	5/32 (4)	1/8	.216 (5,5)	.649 (16,5)	.708 (18)	.275 (7)	.511 (13)	.393 (10)	10
85211 00 004	85223-53-04	5/32 (4)	1/4	.275 (7)	.649 (16,5)	.767 (19,5)	.275 (7)	.590 (15)	.393 (10)	10
*85216 00 002	*85226-04-32	1/4	10/32	.157 (4)	.807 (20,5)	.570 (14,5)	.354 (9)	.354 (9)	.492 (12,5)	10
85211 00 006	85223-04-02	1/4	1/8	.216 (5,5)	.807 (20,5)	.688 (17,5)	.354 (9)	.511 (13)	.492 (12,5)	10
85211 00 007	85223-04-04	1/4	1/4	.275 (7)	.807 (20,5)	.748 (19)	.354 (9)	.590 (15)	.492 (12,5)	10
85211 00 008	85223-05-02	5/16 (8)	1/8	.216 (5,5)	.866 (22)	.748 (19)	.394 (10)	.511 (13)	.551 (14)	10
85211 00 009	85223-05-04	5/16 (8)	1/4	.275 (7)	.866 (22)	.807 (20,5)	.394 (10)	.590 (15)	.551 (14)	10
85211 00 010	85223-05-06	5/16 (8)	3/8	.295 (7,5)	.866 (22)	.826 (21)	.394 (10)	.669 (17)	.551 (14)	10
85211 00 011	85223-06-04	3/8	1/4	.275 (7)	1.043 (26,5)	.866 (22)	.551 (13)	.629 (16)	.669 (17)	10
85211 00 012	85223-06-06	3/8	3/8	.295 (7,5)	1.043 (26,5)	.866 (22)	.551 (13)	.669 (17)	.669 (17)	10
85211 00 013	85223-06-08	3/8	1/2	.354 (9)	1.043 (26,5)	.964 (24,5)	.551 (13)	.826 (21)	.669 (17)	10
85211 00 014	85223-08-04	1/2	1/4	.275 (7)	1.200 (30,5)	.905 (23)	.629 (16)	.629 (16)	.787 (20)	10
85211 00 015	85223-08-06	1/2	3/8	.295 (7,5)	1.200 (30,5)	.905 (23)	.629 (16)	.669 (17)	.787 (20)	10
85211 00 016	85223-08-08	1/2	1/2	.354 (9)	1.200 (30,5)	1.003 (25,5)	.629 (16)	.826 (21)	.787 (20)	10

**85230**

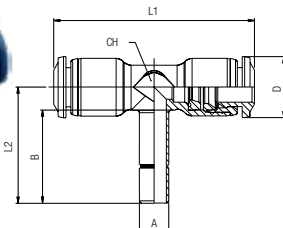
union TEE



Code	Part No.	Tube	L1	L2	CH	D	D1	D2	Pack
85230 00 001	85230-02	1/8	1.220 (31)	.610 (15,5)	.354 (9)	.394 (10)	.118 (3)	.118 (3)	10
85230 00 002	85230-53	5/32 (4)	1.300 (33)	.650 (16,5)	.354 (9)	.394 (10)	.157 (4)	.157 (4)	10
85230 00 019	85230-53-04-53	5/32 (4)-1/4-5/32 (4)	1.574 (40)	.807 (20,5)	.433 (11)	.492 (12,5)	.236 (6)	.157 (4)	10
85230 00 009	85230-04-53-04	1/4-5/32 (4)-1/4	1.614 (41)	.787 (20)	.433 (11)	.492 (12,5)	.157 (4)	.236 (6)	10
85230 00 004	85230-04	1/4	1.614 (41)	.807 (20,5)	.433 (11)	.492 (12,5)	.236 (6)	.236 (6)	10
85230 00 010	85230-05-04-05	5/16 (8)-1/4-5/16 (8)	1.763 (45)	.886 (22,5)	.512 (13)	.551 (14)	.236 (6)	.314 (8)	10
85230 00 005	85230-05	5/16 (8)	1.723 (44)	.866 (22)	.512 (13)	.551 (14)	.314 (8)	.314 (8)	10
85230 00 015	85230-05-06-05	5/16 (8)-3/8-5/16 (8)	2.047 (52)	1.043 (26,5)	.630 (16)	.669 (17)	.394 (10)	.314 (8)	10
85230 00 011	85230-06-05-06	3/8-5/16 (8)-3/8	2.087 (53)	1.024 (26)	.630 (16)	.669 (17)	.314 (8)	.394 (10)	10
85230 00 006	85230-06	3/8	2.087 (53)	1.044 (26,5)	.630 (16)	.669 (17)	.394 (10)	.394 (10)	10
85230 00 017	85230-06-08-06	3/8-1/2-3/8	2.343 (59,5)	1.200 (30,5)	.748 (19)	.787 (20)	.472 (12)	.394 (10)	10
85230 00 012	85230-08-06-08	1/2-3/8-1/2	2.422 (61,5)	1.181 (30)	.748 (19)	.787 (20)	.394 (10)	.472 (12)	10
85230 00 007	85230-08	1/2	2.422 (61,5)	1.181 (30)	.748 (19)	.787 (20)	.472 (12)	.472 (12)	10

**85240**

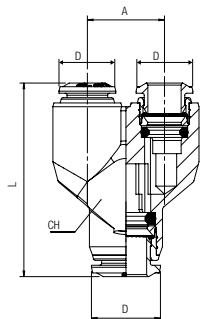
Tee Plug In



Code	Part No.	Tube	A	B	L1	L2	CH	D	Pack
85240 00 001	85240-53	5/32 (4)	5/32 (4)	.669 (17)	1.299 (33)	.815 (20,7)	.276 (7)	.394 (10)	10
85240 00 002	85240-53-04	5/32 (4)	1/4	.748 (19)	1.299 (33)	.886 (22,5)	.276 (7)	.394 (10)	10
85240 00 006	85240-04-53	1/4	5/32 (4)	.669 (17)	1.614 (41)	.846 (21,5)	.354 (9)	.492 (12,5)	10
85240 00 005	85240-04	1/4	1/4	.748 (19)	1.614 (41)	.933 (23,7)	.354 (9)	.492 (12,5)	10
85240 00 007	85240-05	5/16 (8)	5/16 (8)	.787 (20)	1.732 (44)	1.024 (26)	.394 (10)	.551 (14)	10
85240 00 008	85240-05-06	5/16 (8)	3/8	.886 (22,5)	1.732 (44)	1.102 (28)	.394 (10)	.551 (14)	10
85240 00 009	85240-06	3/8	3/8	.886 (22,5)	2.087 (53)	1.181 (30)	.512 (13)	.669 (17)	10
85240 00 010	85240-06-08	3/8	1/2	.983 (25)	2.087 (53)	1.259 (32)	.512 (13)	.669 (17)	10
85240 00 011	85240-08	1/2	1/2	1.003 (25,5)	2.422 (61,5)	1.319 (33,5)	.629 (16)	.787 (20)	10

# 85310

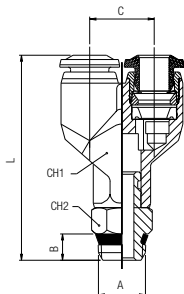
union Y



Code	Part No.	Tube	Tube	L	A	CH	D	Pack
85310 00 002	85310-53	5/32 (4)	5/32 (4)	1.240 (31,5)	.433 (11)	.393 (10)	.393 (10)	10
85310 00 008	85310-04-53	1/4	5/32 (4)	.532 (13,5)	1.437 (36,5)	.472 (12)	.492(12,5)	10
85310 00 004	85310-04	1/4	1/4	1.456 (37)	.531 (13,5)	.472 (12)	.492(12,5)	10
85310 00 009	85310-05-04	5/16 (8)	1/4	.610 (15,5)	1.614 (41)	.551 (14)	.551 (14)	10
85310 00 005	85310-05	5/16 (8)	5/16 (8)	1.574 (40)	.610 (15,5)	.551 (14)	.551 (14)	10
85310 00 006	85310-06	3/8	3/8	1.909 (48,5)	.748 (19)	.669 (17)	.708 (18)	10
85310 00 011	85310-08-05	1/2	5/16 (8)	.866 (22)	2.263 (57,5)	.787 (20)	.787 (20)	10
85310 00 007	85310-08	1/2	1/2	2.322 (59)	.866 (22)	.787 (20)	.787 (20)	10

# 85320

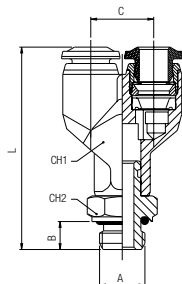
Union Y



Code	Part No.	Tube	A	B	C	L	CH1	CH2	Pack
*85325 00 001	*85325-53-32	5/32 (4)	10/32	.157 (4)	.433 (11)	1.437 (36,5)	.393 (10)	.393 (10)	10
85320 00 001	85320-53-02	5/32 (4)	1/8	.216 (5,5)	.433 (11)	1.496 (38)	.393 (10)	.433 (11)	10
85320 00 002	85325-53-04	5/32 (4)	1/4	.275 (7)	.433 (11)	1.594 (40,5)	.393 (10)	.551 (14)	10
*85325 00 002	*85320-04-32	1/4	10/32	.157 (4)	.531 (13,5)	1.633 (41,5)	.472 (12)	.393 (10)	10
85320 00 003	85320-04-02	1/4	1/8	.216 (5,5)	.511 (13)	1.692 (43)	.472 (12)	.433 (11)	10
85320 00 004	85320-04-04	1/4	1/4	.275 (7)	.531 (13,5)	1.791 (45,5)	.472 (12)	.551 (14)	10
85320 00 005	85320-05-02	5/16 (8)	1/8	.216 (5,5)	.610 (15,5)	1.850 (47)	.551 (14)	.433 (11)	10
85320 00 006	85320-05-04	5/16 (8)	1/4	.275 (7)	.610 (15,5)	1.929 (49)	.551 (14)	.551 (14)	10
85320 00 007	85320-05-06	5/16 (8)	3/8	.295 (7,5)	.610 (15,5)	1.948 (49,5)	.551 (14)	.669 (17)	10
85320 00 008	85320-06-04	3/8	1/4	.275 (7)	.748 (19)	2.224 (56,5)	.669 (17)	.551 (14)	10
85320 00 009	85320-06-06	3/8	3/8	.295 (7,5)	.748 (19)	2.263 (57,5)	.669 (17)	.669 (17)	10
85320 00 010	85320-06-08	3/8	1/2	.354 (9)	.748 (19)	2.362 (60)	.669 (17)	.826 (21)	10
85320 00 011	85320-08-06	1/2	3/8	.295 (7,5)	.866 (22)	2.618 (66,5)	.787 (20)	.669 (17)	10
85320 00 012	85320-08-08	1/2	1/2	.354 (9)	.866 (22)	2.677 (68)	.787 (20)	.826 (21)	10

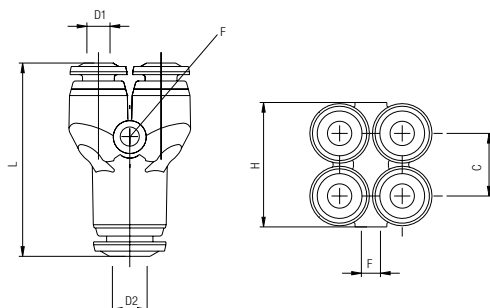
\* For part numbers with 10-32 threads  
85325

UNF



# 85330

4 Position Y



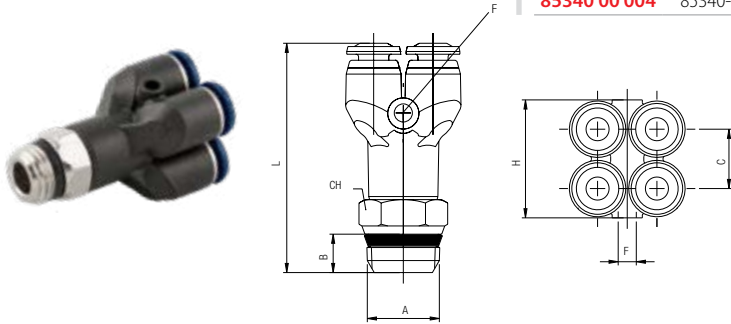
Code	Part No.	D1	D2	C	L	F	H	Pack
85330 00 002	85330-53	5/32 (4)	5/32 (4)	.425 (10,8)	1.319 (33,5)	.130 (3,3)	.846 (21,5)	10
85330 00 001	85330-53-04	5/32 (4)	1/4	.433 (11)	1.359 (34,5)	.130 (3,3)	.846 (21,5)	10
85330 00 003	85330-04	1/4	1/4	.531 (13,5)	1.555 (39,5)	.130 (3,3)	1.064 (27)	10
85330 00 004	85330-04-05	1/4	5/16 (8)	.531 (13,5)	1.575 (40)	.130 (3,3)	1.064 (27)	10

**85340**

4 Position Y



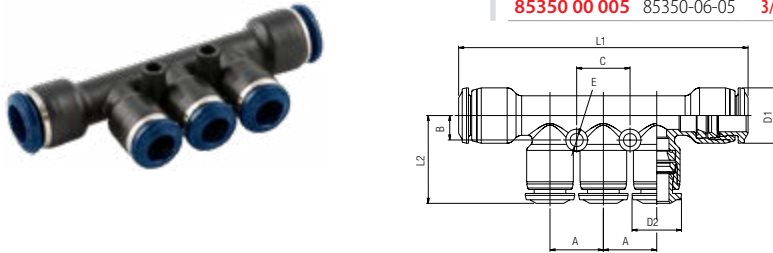
Code	Part No.	Tube	A	B	C	L	H	CH	F	Pack
85340 00 001	85340-53-02	5/32 (4)	1/8	.217 (5,5)	.425 (10,8)	1.555 (39,5)	.846 (21,5)	.433 (11)	.130 (3,3)	10
85340 00 002	85340-53-04	5/32 (4)	1/4	.276 (7)	.425 (10,8)	1.654 (42)	.846 (21,5)	.551 (14)	.130 (3,3)	10
85340 00 003	85340-04-02	1/4	1/8	.217 (5,5)	.531 (13,5)	1.831 (46,5)	1.064 (27)	.433 (11)	.130 (3,3)	10
85340 00 004	85340-04-04	1/4	1/4	.276 (7)	.531 (13,5)	1.889 (48)	1.064 (27)	.551 (14)	.130 (3,3)	10



**85350**

REDUCTION MANIFOLD

Code	Part No.	Tube	A	B	L1	L2	C	D1	D2	E	Pack
85350 00 002	85350-04-53	1/4-5/32(4)	.531 (13,5)	.236 (6)	2.913 (74)	.866 (22)	.531 (13,5)	.551 (14)	.472 (12)	.130 (3,3)	10
85350 00 001	85350-05-53	5/16(8)-5/32(4)	.531 (13,5)	.236 (6)	2.873 (73)	.866 (22)	.531 (13,5)	.551 (14)	.472 (12)	.130 (3,3)	10
85350 00 003	85350-05-04	5/16(8)-1/4	.531 (13,5)	.236 (6)	2.873 (73)	.886 (22,5)	.531 (13,5)	.551 (14)	.492(12,5)	.130 (3,3)	10
85350 00 004	85350-06-04	3/8-1/4	.591 (15)	.276 (7)	3.267 (83)	.946 (24)	.590 (15)	.669 (17)	.551 (14)	.130 (3,3)	10
85350 00 005	85350-06-05	3/8-5/16(8)	.591 (15)	.276 (7)	3.267 (83)	.906 (23)	.590 (15)	.669 (17)	.551 (14)	.130 (3,3)	10

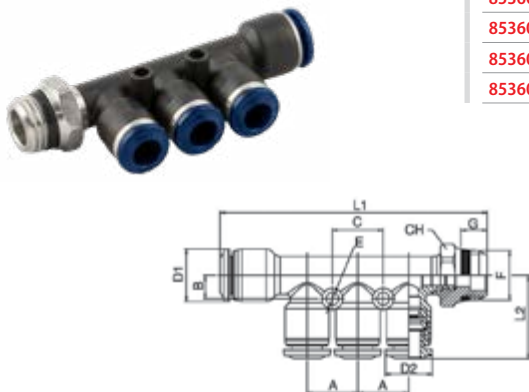


**85360**

Reduction Manifold

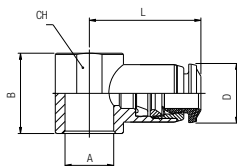


Code	Part No.	Tube	F	A	B	C	G	L1	L2	CH	E	D1	D2	Pack
85360 00 003	85360-04-53-02	1/4-5/32	1/8	.531 (13,5)	.236 (6)	.531 (13,5)	.217 (5,5)	2.757 (70)	.866 (22)	.511 (13)	.130 (3,3)	.551 (14)	.471 (12)	10
85360 00 004	85360-04-53-04	1/4-5/32	1/4	.531 (13,5)	.236 (6)	.531 (13,5)	.276 (7)	2.817 (71,5)	.866 (22)	.591 (15)	.130 (3,3)	.551 (14)	.471 (12)	10
85360 00 001	85360-05-53-02	5/16-5/32	1/8	.531 (13,5)	.236 (6)	.531 (13,5)	.217 (5,5)	2.757 (70)	.866 (22)	.511 (13)	.130 (3,3)	.551 (14)	.471 (12)	10
85360 00 002	85360-05-53-04	5/16-5/32	1/4	.531 (13,5)	.236 (6)	.531 (13,5)	.276 (7)	2.817 (71,5)	.866 (22)	.591 (15)	.130 (3,3)	.551 (14)	.471 (12)	10
85360 00 005	85360-05-04-02	5/16-1/4	1/8	.531 (13,5)	.236 (6)	.531 (13,5)	.217 (5,5)	2.757 (70)	.866 (22)	.511 (13)	.130 (3,3)	.551 (14)	.491 (12,5)	10
85360 00 006	85360-05-04-04	5/16-1/4	1/4	.531 (13,5)	.236 (6)	.531 (13,5)	.276 (7)	2.817 (71,5)	.866 (22)	.591 (15)	.130 (3,3)	.551 (14)	.491 (12,5)	10
85360 00 007	85360-06-04-04	3/8-1/4	1/4	.590 (15)	.276 (7)	.590 (15)	.276 (7)	3.208 (81,5)	.946 (24)	.629 (16)	.130 (3,3)	.669 (17)	.551 (14)	10
85360 00 008	85360-06-04-06	3/8-1/4	3/8	.590 (15)	.276 (7)	.590 (15)	.296 (7,5)	3.208 (81,5)	.946 (24)	.669 (17)	.130 (3,3)	.669 (17)	.551 (14)	10
85360 00 009	85360-06-05-04	3/8-5/16	1/4	.590 (15)	.276 (7)	.590 (15)	.276 (7)	3.208 (81,5)	.906 (23)	.629 (16)	.130 (3,3)	.669 (17)	.551 (14)	10
85360 00 010	85360-06-05-06	3/8-5/16	3/8	.590 (15)	.276 (7)	.590 (15)	.296 (7,5)	3.208 (81,5)	.906 (23)	.669 (17)	.130 (3,3)	.669 (17)	.551 (14)	10



# 85500

SINGLE BANJO BODY

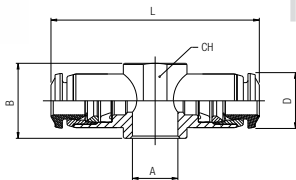


Code	Part No.	Tube	A	B	L	CH	D	Pack
85500 00 019	85500-02-M6	1/8	M6	.551 (14)	.807 (20,5)	.354 (9)	.394 (10)	10
85500 00 001	85500-02-02	1/8	1/8	.649 (16,5)	.807 (20,5)	.551 (14)	.394 (10)	10
85500 00 002	85500-53-M5	5/32 (4)	M5	.551 (14)	.767 (19,5)	.354 (9)	.394 (10)	10
85500 00 003	85500-53-M6	5/32 (4)	M6	.551 (14)	.767 (19,5)	.354 (9)	.394 (10)	10
85500 00 004	85500-53-02	5/32 (4)	1/8	.649 (16,5)	.846 (21,5)	.551 (14)	.394 (10)	10
85500 00 005	85500-53-04	5/32 (4)	1/4	.728 (18,5)	.925 (23,5)	.708 (18)	.394 (10)	10
85500 00 021	85500-04-M5	1/4	M5	.551 (14)	.826 (21)	.354 (9)	.472 (12)	10
85500 00 010	85500-04-M6	1/4	M6	.551 (14)	.826 (21)	.354 (9)	.472 (12)	10
85500 00 011	85500-04-02	1/4	1/8	.649 (16,5)	.905 (23)	.551 (14)	.472 (12)	10
85500 00 012	85500-04-04	1/4	1/4	.728 (18,5)	1.003 (25,5)	.708 (18)	.472 (12)	10
85500 00 013	85500-05-02	5/16 (8)	1/8	.649 (16,5)	.925 (23,5)	.551 (14)	.551 (14)	10
85500 00 014	85500-05-04	5/16 (8)	1/4	.728 (18,5)	1.023 (26)	.708 (18)	.551 (14)	10
85500 00 015	85500-05-06	5/16 (8)	3/8	.866 (22)	1.082 (27,5)	.826 (21)	.551 (14)	10
85500 00 020	85500-06-04	3/8	1/4	.728 (18,5)	1.221 (31)	.708 (18)	.669 (17)	10
85500 00 016	85500-06-06	3/8	3/8	.866 (22)	1.200 (30,5)	.826 (21)	.669 (17)	10
85500 00 017	85500-08-06	1/2	3/8	.866 (22)	1.279 (32,5)	.826 (21)	.787 (20)	10
85500 00 018	85500-08-08	1/2	1/2	1.023 (26)	1.377 (35)	1.023 (26)	.787 (20)	10

For BANJO STEM assemblies

# 85510

DOUBLE BANJO BODY

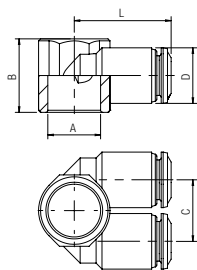


Code	Part No.	Tube	A	B	L	CH	D	Pack
85510 00 008	85510-53-M5	5/32 (4)	M5	.551 (14)	1.535 (39)	.354 (9)	.394 (10)	10
85510 00 001	85510-53-02	5/32 (4)	1/8	.649 (16,5)	1.692 (43)	.551 (14)	.394 (10)	10
85510 00 006	85510-04-02	1/4	1/8	.649 (16,5)	1.811 (46)	.551 (14)	.472 (12)	10
85510 00 007	85510-04-04	1/4	1/4	.728 (18,5)	2.007 (51)	.708 (18)	.472 (12)	10
85510 00 004	85510-05-02	5/16 (8)	1/8	.649 (16,5)	1.850 (47)	.551 (14)	.551 (14)	10
85510 00 005	85510-05-04	5/16 (8)	1/4	.728 (18,5)	2.047 (52)	.708 (18)	.551 (14)	10

For BANJO STEM assemblies

# 85520

DOUBLE BANJO BODY



Code	Part No.	Tube	A	B	C	L	D	Pack
85520 00 001	85520-53-02	5/32 (4)	1/8	.650 (16,5)	.512 (13)	.827 (21)	.472 (12)	10
85520 00 002	85520-53-04	5/32 (4)	1/4	.728 (18,5)	.610 (15,5)	.945 (24)	.551 (14)	10
85520 00 003	85520-04-02	1/4	1/8	.650 (16,5)	.512 (13)	.846 (21,5)	.492 (12,5)	10
85520 00 004	85520-04-04	1/4	1/4	.728 (18,5)	.610 (15,5)	.965 (24,5)	.551 (14)	10
85520 00 005	85520-04-06	1/4	3/8	.866 (22)	.531 (13,5)	.984 (25)	.492 (12,5)	10
85520 00 006	85520-05-04	5/16 (8)	1/4	.728 (18,5)	.610 (15,5)	.965 (24,5)	.551 (14)	10
85520 00 007	85520-05-06	5/16 (8)	3/8	.866 (22)	.748 (19)	1.102 (28)	.669 (17)	10
85520 00 008	85520-06-06	3/8	3/8	.866 (22)	.748 (19)	1.102 (28)	.669 (17)	10

For BANJO STEM assemblies

**BSPB BANJO STEM ASSEMBLIES**

Examples of various banjo stems with single and double banjo bodies

**BANJO STEM**

Part No.  
55410  
55420  
55430



**BANJO BODY  
INCH  
OR METRIC**



**Single  
banjo stem**

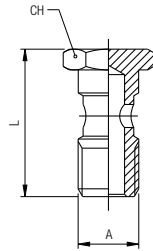
**Double  
banjo stem**

**Triple  
banjo stem**

With nylon banjo body remove the washer.

**55410**

**BANJO SCREW SINGLE**

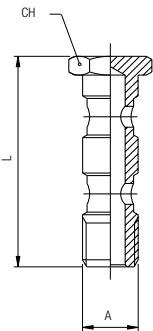


Code	Usa Ref	A	L	CH	Pack.
55410 00 01 B5 NB	55410-M5	M5	.866 (22)	.315 (8)	10
55410 00 01 B8 NB	55410-M6	M6	.906 (23)	.315 (8)	10
55410 00 01 02 NB	55410-1/8	1/8	1.102 (28)	.551 (14)	10
55410 00 01 03 NB	55410-1/4	1/4	1.260 (32)	.669 (17)	10
55410 00 01 04 NT	55410-3/8	3/8	1.417 (36)	.748 (19)	10
55410 00 01 05 NT	55410-1/2	1/2	1.654 (42)	.945 (24)	10
55410 00 01 D6 NT	55410-M12X1,5	*M12x1.5	1.260 (32)	.669 (17)	10

\* With this banjo SCREW using 1/4 orienting banjo body.

**55420**

**BANJO SCREW DOUBLE**

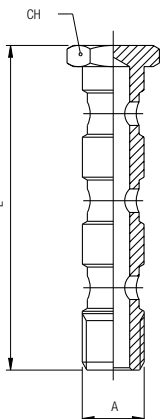


Code	Usa Ref	A	L	CH	Pack.
55420 00 01 02 NT	55420-1/8	1/8	1.752 (44.5)	.551 (14)	10
55420 00 01 03 NT	55420-1/4	1/4	1.988 (50.5)	.669 (17)	10
55420 00 01 04 NT	55420-3/8	3/8	2.283 (58)	.748 (19)	10
55420 00 01 05 NT	55420-1/2	1/2	2.677 (68)	.945 (24)	10
55420 00 01 D6 NT	55420-M12X1,5	*M12x1.5	1.988 (50.5)	.669 (17)	10

\* With this banjo SCREW using 1/4 orienting banjo body.

**55430**

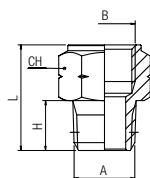
BANJO SCREW TRIPLE



Code	Usa Ref	A	L	CH	Pack.
55430 00 01 02 NT	55430-1/8	1/8	2.402 (61)	.551 (14)	10
55430 00 01 03 NT	55430-1/4	1/4	2.717 (69)	.669 (17)	10
55430 00 01 04 NT	55430-3/8	3/8	3.150 (80)	.748 (19)	10
55430 00 01 05 NT	55430-1/2	1/2	3.701 (94)	.945 (24)	10

**82241**

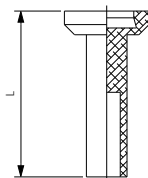
ADAPTER FEMALE BSP - MALE NPTF



Code	Usa Ref	A (NPTF)	B (BSP)	H	L	CH	Pack.
82241 00 01 8K NB	82241N-32-M5	10/32 UNF	M5	.177 (4.5)	.472 (12)	.315 (8)	10
82241 00 01 2W NB	82241N-02-02	1/8	1/8	.335 (8.5)	.768 (19.5)	.551 (14)	10
82241 00 01 6W NB	82241N-04-04	1/4	1/4	.512 (13)	1.063 (27)	.669 (17)	10
82241 00 01 AB NB	82241N-06-06	3/8	3/8	.512 (13)	1.102 (28)	.866 (22)	10
82241 00 01 AG NB	82241N-08-08	1/2	1/2	.669 (17)	1.358 (34.5)	1.063 (27)	10

**88610**

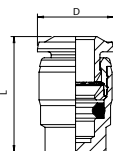
POLYAMIDE PLUG



Code	Usa Ref	Tube	L	Pack.
88610 00 31 02 NE	88610B-02	1/8	.709 (18)	10
88610 00 31 03 NE	88610B-04	1/4	.965 (24.5)	10
88610 00 31 27 NE	88610B-53	5/32	.925 (23.5)	10
88610 00 31 28 NE	88610B-05	5/16	1.024 (26)	10
88610 00 31 04 NE	88610B-06	3/8	1.122 (28.5)	10
88610 00 31 05 NE	88610B-08	1/2	1.122 (28.5)	10

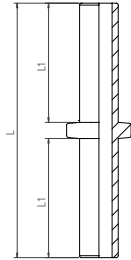
**85620**

TERMINAL PLUG



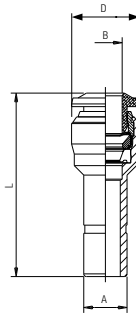
Code	Part No.	Tube	D	L	Pack
85620 00 004	85620-53	5/32 (4)	.393 (10)	.708 (18)	10
85620 00 002	85620-04	1/4	.492 (12,5)	.787 (20)	10
85620 00 005	85620-05	5/16 (8)	.551 (14)	.846 (21,5)	10
85620 00 006	85620-06	3/8	.669 (17)	.984 (25)	10
85620 00 007	85620-08	1/2	.787 (20)	1.082 (27,5)	10

**55625**  
DOUBLE JOINT



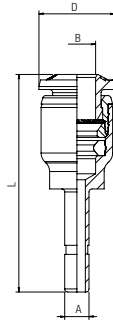
Code	Part No.	Tube	L	L1	Pack
55625 00 31 03 NE	55625-6	1/4 (6)	1.555 (39,5)	.728 (18,5)	10
55625 00 31 X1 NE	55625-4	5/32 (4)	1.358 (34,5)	.630 (16)	10
55625 00 31 X7 NE	55625-8	5/16 (8)	1.654 (42)	.768 (19,5)	10
55625 00 31 04 NE	55625-10	3/8 (10)	2.028 (51,5)	.945 (24)	10
55625 00 31 05 NE	55625-12	1/2 (12)	2.362 (60)	1.102 (28)	10

**85700**  
tube REDUCER



Code	Part No.	A	B	L	D	Pack
85700 00 001	85700-04-53	1/4	5/32 (4)	1.339 (34)	.394 (10)	10
85700 00 008	85700-05-53	5/16 (8)	5/32 (4)	1.496 (38)	.472 (12)	10
85700 00 002	85700-05-04	5/16 (8)	1/4	1.535 (39)	.492 (12,5)	10
85700 00 003	85700-06-04	3/8	1/4	1.673 (42,5)	.492 (12,5)	10
85700 00 004	85700-06-05	3/8	5/16 (8)	1.654 (42)	.551 (14)	10
85700 00 005	85700-08-04	1/2	1/4	1.516 (38,5)	.492 (12,5)	10
85700 00 006	85700-08-05	1/2	5/16 (8)	1.634 (41,5)	.551 (14)	10
85700 00 007	85700-08-06	1/2	3/8	1.909 (48,5)	.669 (17)	10

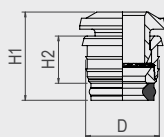
**85705**  
Tube Expander



Code	Part No.	A	B	L	D	Pack
85705 00 002	85705-04-05	1/4	5/16 (8)	1.516 (38,5)	.551 (14)	10
85705 00 003	85705-04-06	1/4	3/8	1.654 (42)	.669 (17)	10
85705 00 001	85705-53-04	5/32 (4)	1/4	1.417 (36)	.472 (12)	10
85705 00 004	85705-05-06	5/16 (8)	3/8	1.693 (43)	.669 (17)	10
85705 00 005	85705-06-08	3/8	1/2	1.89 (48)	.787 (20)	10

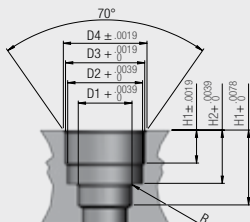
# 87800

PUSH-FIT CARTRIDGES



Code	Part No.	Tube	H1	H2	D	Pack
87800 00 001	87800-02	1/8	.382 (9,7)	.197 (5)	.264 (6,7)	25
87800 00 002	87800-53	5/32 (4)	.433 (11)	.220 (5,6)	.343 (8,7)	25
87800 00 003	87800-04	1/4	.528 (13,4)	.272 (6,9)	.423 (10,75)	25
87800 00 004	87800-05	5/16 (8)	.528 (13,4)	.270 (6,85)	.500 (12,7)	25
87800 00 005	87800-06	3/8	.630 (16)	.335 (8,5)	.618 (15,7)	25
87800 00 006	87800-08	1/2	.720 (18,3)	.374 (9,5)	.720 (18,3)	25

## SEAT



Seats dimensions push-fit cartridges.

Tube	D1	D2	D3	D4	H1	H2	H3	R
1/8 (3)	.134 (3,4)	.238 (6,05)	.252 (6,4)	.274 (6,95)	.146 (3,7)	.240 (6,1)	.339 (8,6)	.020 (0,5)
5/32 (4)	.165 (4,2)	.293 (7,45)	.331 (8,4)	.354 (9)	.148 (3,75)	.256 (6,5)	.374 (9,5)	.020 (0,5)
1/4 (6.6)	.259 (6,6)	.368 (9,35)	.411 (10,45)	.447 (11,35)	.197 (5)	.335 (8,5)	.453 (11,5)	.020 (0,5)
5/16 (8)	.323 (8,2)	.449 (11,4)	.488 (12,4)	.508 (12,9)	.205 (5,2)	.335 (8,5)	.492 (12,5)	.030 (0,75)
3/8 (9.7)	.381 (9,7)	.571 (14,5)	.606 (15,4)	.630 (16)	.264 (6,7)	.413 (10,5)	.591 (15)	.030 (0,75)
1/2 (13)	.511 (13)	.669 (17)	.709 (18)	.748 (19)	.295 (7,5)	.476 (12,1)	.669 (17)	.039 (1)

# 55801

TOOL FOR PUSH-FIT CARTRIDGES SEAT



Code	Part No.	Tube	ø Body
55801 00 007	55801-3	1/8 (3)	.394 (10)
55801 00 001	55801-4	5/32 (4)	.394 (10)
87801 00 002	87801-04	1/4	.472 (12)
55801 00 003	55801-8	5/16 (8)	.472 (12)
87801 00 003	87801-06	3/8	.630 (16)
87801 00 004	87801-8	1/2	.630 (16)

# 55802

TOOL FOR PUSH-FIT CARTRIDGES SEAT



Code	Part No.	Tube
55802 00 001	55802-3	1/8
55802 00 002	55802-4	5/32 (4)
55802 00 004	55802-6	1/4 (6)
55802 00 005	55802-8	5/16 (8)
55802 00 006	55802-10	3/8 (10)
55802 00 007	55802-12	1/2 (12)

### PUSH-FIT CARTRIDGE ASSEMBLING INSTRUCTIONS ART. 87800

**1** Use tool to drill into material to create the seat for the Push-Fit Cartridge.

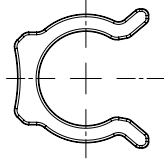
**2** Insert lip seal.

**3** Insert cartridge into the assembling tool.

**4** Press cartridge into the seat until it stops.

**50980**

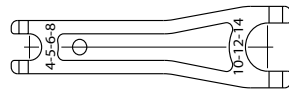
SECURITY CLIP



Code	Part No.	Tube	Pack
50980 00 32 X1 RO	50980-53	5/32 (4)	50
50980 00 32 X4 RO	50980-04	1/4 (6)	50
50980 00 32 X7 RO	50980-05	5/16 (8)	50
50980 00 32 X9 RO	50980-06	3/8 (10)	50
50980 00 32 Y1 RO	50980-08	1/2 (12)	50

**50990**

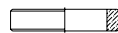
TOOL FOR DISASSEMBLING



Code	Usa Ref	Pack.
50990 00 001	50990	10

**50006**

THREAD PACKING FOR THE "SWIFFIT" TAPER THREADS



Code	Usa Ref	Thread	Pack.
50006 00 24 02 00	50006-02	1/8	10
50006 00 24 03 00	50006-04	1/4	10
50006 00 24 04 00	50006-06	3/8	10
50006 00 24 05 00	50006-08	1/2	10