



DC PUMPS BP 3000 - BP 3000 INLINE

EN. Fuel vane pumps.
Powerful, dependable and economical, they are available with 12 and 24-volt direct current motors.
Thanks to their compact sizes, these pumps are used as the primary system in earthmoving machinery.

ES. Bombas de paletas para el transvase.
Potentes, fiables y económicas, están disponibles con motor de corriente continua de 12 y 24 Voltios.

Por su carácter compacto, los fabricantes instalan estas bombas directamente en máquinas de movimiento de tierra.

PT. Bombas de palhetas para transferência.
Potentes, fiáveis e económicas, estão disponíveis com motor de corrente contínua 12 e 24 Volts.

Por serem compactas, estas bombas são usadas como primeiro sistema em máquinas de terraplanagem.

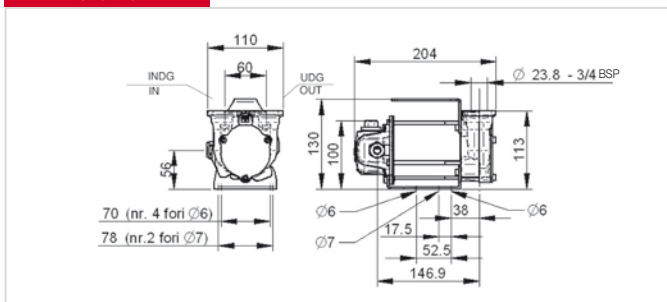
PERFORMANCE

- Vane pump with rotor.
- By-pass valve incorporated into the pump body.
- Duty cycle 30 min.
- Flow rate up to 50 l/min
- Noise level below 70 dB
- 12 - 24 V DC operation

- Bomba de paletas con rotor.
- Válvula de by-pass incorporada en el cuerpo de la bomba.
- Ciclo de funcionamiento 30 min.
- Caudal hasta 50 l/min
- Nivel sonoro inferior a 70 dB
- Funcionamiento 12 - 24 V CC

- Bomba de palhetas com rotor.
- Válvula de by pass incorporada no corpo da bomba.
- Ciclo de trabalho 30 min.
- Caudal até 50 l/min
- Ruído inferior a 70 dB
- Funcionamento 12 - 24 V DC

DIMENSIONS



GUARANTEE



Guaranteed IP55 protection
Prevents water and dust entering the motor.



EMC Test
No interference with power circuits.



Vibration Test
Able to resist high vibrations.

PRODUCTS' RANGE WEIGHT AND PACKAGING

Code	Weight		Packaging		
	kg	lbs	mm	inch	pcs/box
F00342000	3,5	7,9	200x120x140	7,9x4,7x5,5	1
F00347000	3,5	7,9	200x120x140	7,9x4,7x5,5	1
F00357500	3,5	7,9	200x350x270	7,9x13,8x10,6	1
F00358500	3,5	7,9	200x350x270	7,9x13,8x10,6	1



REGISTERED DESIGN

Flow-rate

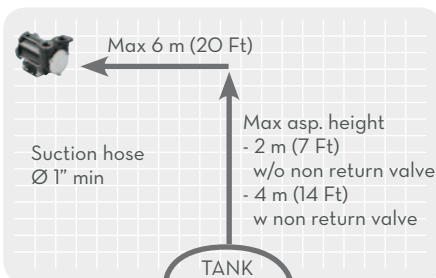
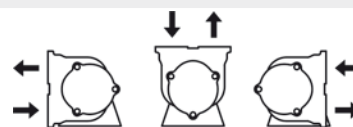
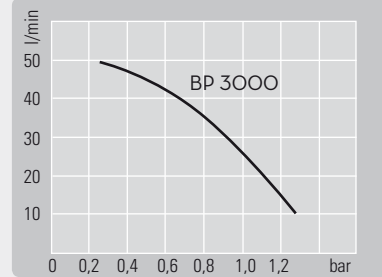
up to
50 l/min
(up to 13 gpm)



BP 3000 - PORTS NOT THREADED



BP 3000 INLINE - THREADED PORTS



ON REQUEST

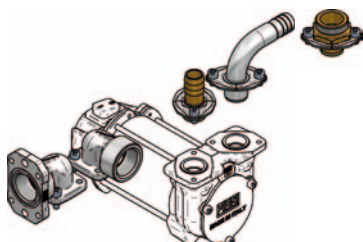


- KIT terminal box + 2mt cable + fuse 25A with clamp BP3000 12V - Code F16293000
- KIT terminal box + 4mt cable + fuse 25A with clamp BP3000 12V - Code F16295000
- KIT terminal box + 2mt cable + fuse 15A with clamp BP3000 24V - Code F16294000
- KIT terminal box + 4mt cable + fuse 15A with clamp BP3000 24V - Code F16296000



Terminal box
Code F1601100A

BP 3000 VERTICAL PORTS ONLY



Kit straight hose tail
3/4"
Code F16172000
(No.02 pcs)



90° hose tail 3/4"
Code F16173000
(No.01 pcs)



Flanged elbow 1" BSP
Code F16178000
(No.01 pcs)



Flanged elbow 1" BSP
Code F161770000
(No.01 pcs)

PRODUCTS' RANGE TECHNICAL DATA

Code	Description	Fluids type	Flow-rate		Voltage			rpm	Duty cycle min.	Max working pressure bar.
			l/min	gpm	DC Volt	Power Watt	Amp. max.			
F00342000	BP3000 12V	D	50	7	12	300	24	2900	30	1,5
F00347000	BP3000 24V / 12V	D	50/30	13/6	24/12	310/80	13/6,5	2900/1500	30	1,5
F00357500	BP3000 INLINE 12V	D	50	7	12	300	24	2900	30	1,5
F00358500	BP3000 INLINE 24V / 12V	D	50/30	13/6	24/12	310/80	13/6,5	2900/1500	30	1,5