



DC PUMPS BIPUMP

EN. Fuel vane pumps. Displacement, rotary vane pumps for transferring diesel fuel, characterized by high flow rates. Available in 12 and 24 Volt versions.

Technical features:

Vane pump with rotor. By-pass valve incorporated into the pump body. Working cycle of 30 min. Integrated On/Off switch. Flanged 1" connectors.

ES. Bombas de paletas para trasiego. Bomba de tipo rotativo volumétrico de paletas para el trasiego de gasóleo, caracterizada por un caudal elevado. Disponible en la versión de 12 y 24 Voltios.

Características técnicas:

Bomba de paletas con rotor. Válvula de by-pass incorporada en el cuerpo de la bomba. Ciclo de trabajo de 30 min. Interruptor de encendido/apagado integrado. Conexiones embridadas de 1".

PT. Bombas com palhetas para transferência. Bomba de tipo rotativo volumétrico com palhetas para transferência de óleo diesel, caracterizada por alta capacidade. Disponíveis em versões de 12 e 24 Volts.

Características técnicas:

Bomba do tipo com palhetas e rotor. Válvula by-pass incorporada no corpo da bomba. Ciclo de trabalho de 30 min. Interruptor on/off integrado. Encaixes com flange de 1".

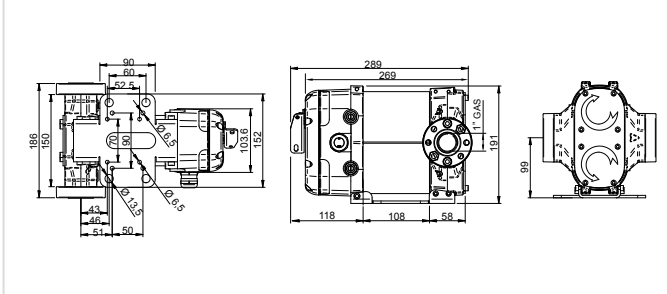
PERFORMANCE

- Flow rate up to 85 l/min
- 12 - 24 V DC operation
- Duty cycle 30 min.

- Caudal hasta 85 l/min
- Funcionamiento 12 - 24 V CC
- Ciclo de funcionamiento 30 min.

- Caudal até 85 l/min
- Funcionamento 12 - 24 V DC
- Ciclo de trabalho 30 min.

DIMENSIONS



GUARANTEE

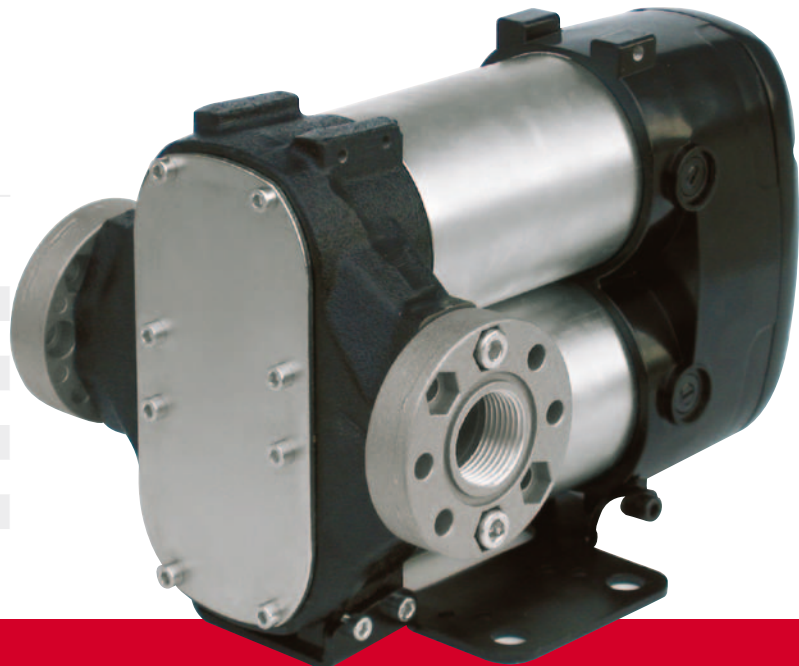


IP Protection Guaranteed

Guaranteed IP55 protection
Prevents water and dust entering the motor.

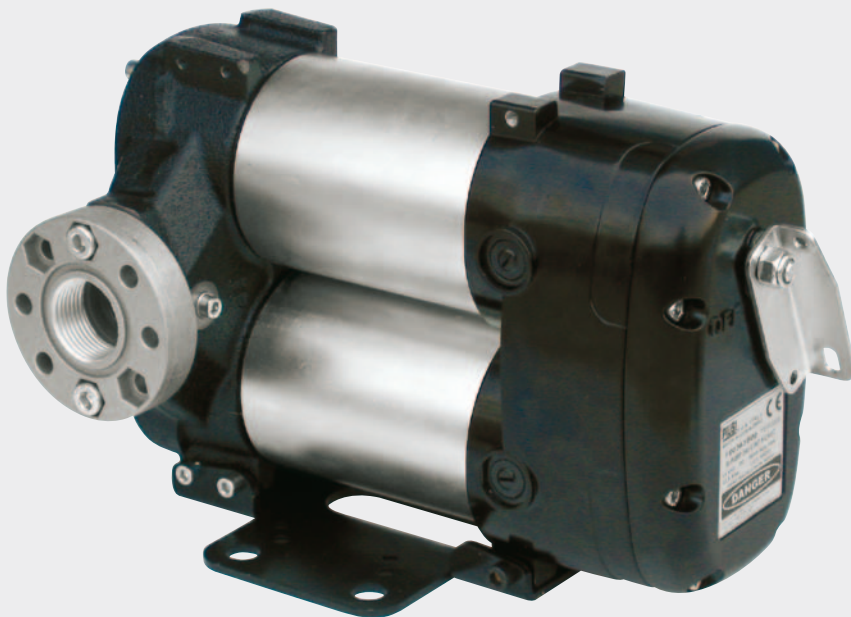
PRODUCTS' RANGE WEIGHT AND PACKAGING

Code	Weight		Packaging		
	kg	lbs	mm	inch	pcs/box
F00363A0A	9,9	21,8	345x175x255	13,6x6,9x10	1
F00363B0A	9,9	21,8	345x175x255	13,6x6,9x10	1
F0036301A	10,2	22,5	345x175x255	13,6x6,9x10	1
F0036302A	10,4	22,5	345x175x255	13,6x6,9x10	1
F0036303A	10,2	22,5	345x175x255	13,6x6,9x10	1
F0036304A	10,4	22,5	345x175x255	13,6x6,9x10	1
F0036321A	8,5	18,7	345x175x255	13,6x6,9x10	1

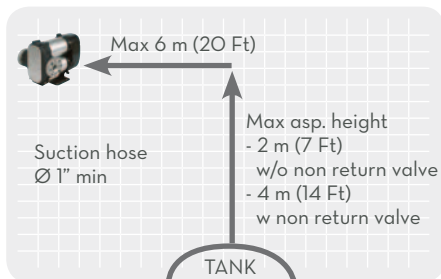
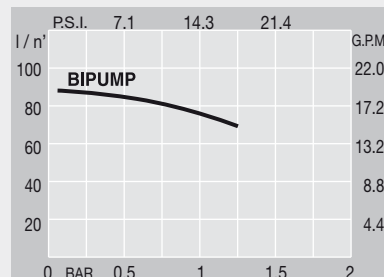


Flow-rate

up to
85 l/min
(up to 22,4 gpm)



Bipump



FEATURES

On/Off switch



Flanged connect.



ON REQUEST

Kit Carry (optional)



PRODUCTS' RANGE TECHNICAL DATA

Code	Description	Fluids type	Flow-rate		Voltage			Duty cycle min.	rpm	Meter mod.	Inlet BSP
			l/min	gpm	DC Volt	Power Watt	Amp. max.				
F00363A0A	Bipump 12V with on/off switch	D	85	22,4	12	500	42	30	2000	K44	1"1/2
F00363B0A	Bipump 24V with on/off switch	D	85	22,4	24	500	21	30	2000	K44	1"1/2
F0036301A	Bipump 12V with cable 2 m	D	85	22,4	12	500	42	30	2000	K44P	1"1/2
F0036302A	Bipump 12V with cable 4 m	D	85	22,4	12	500	42	30	2000	K44P	1"1/2
F0036303A	Bipump 24V with cable 2 m	D	85	22,4	24	500	21	30	2000	K44	1"1/2
F0036304A	Bipump 24V with cable 4 m	D	85	22,4	24	500	21	30	2000	K44	1"1/2
F0036321A	Bipump 12/24 without on/off switch	D	85	22,4	12/24	500/500	42/21	30/30	2000	K44P	1"1/2
R14334000	Kit cable 2 m										
R14335000	Kit cable 4 m										
F14200000	Kit handle										